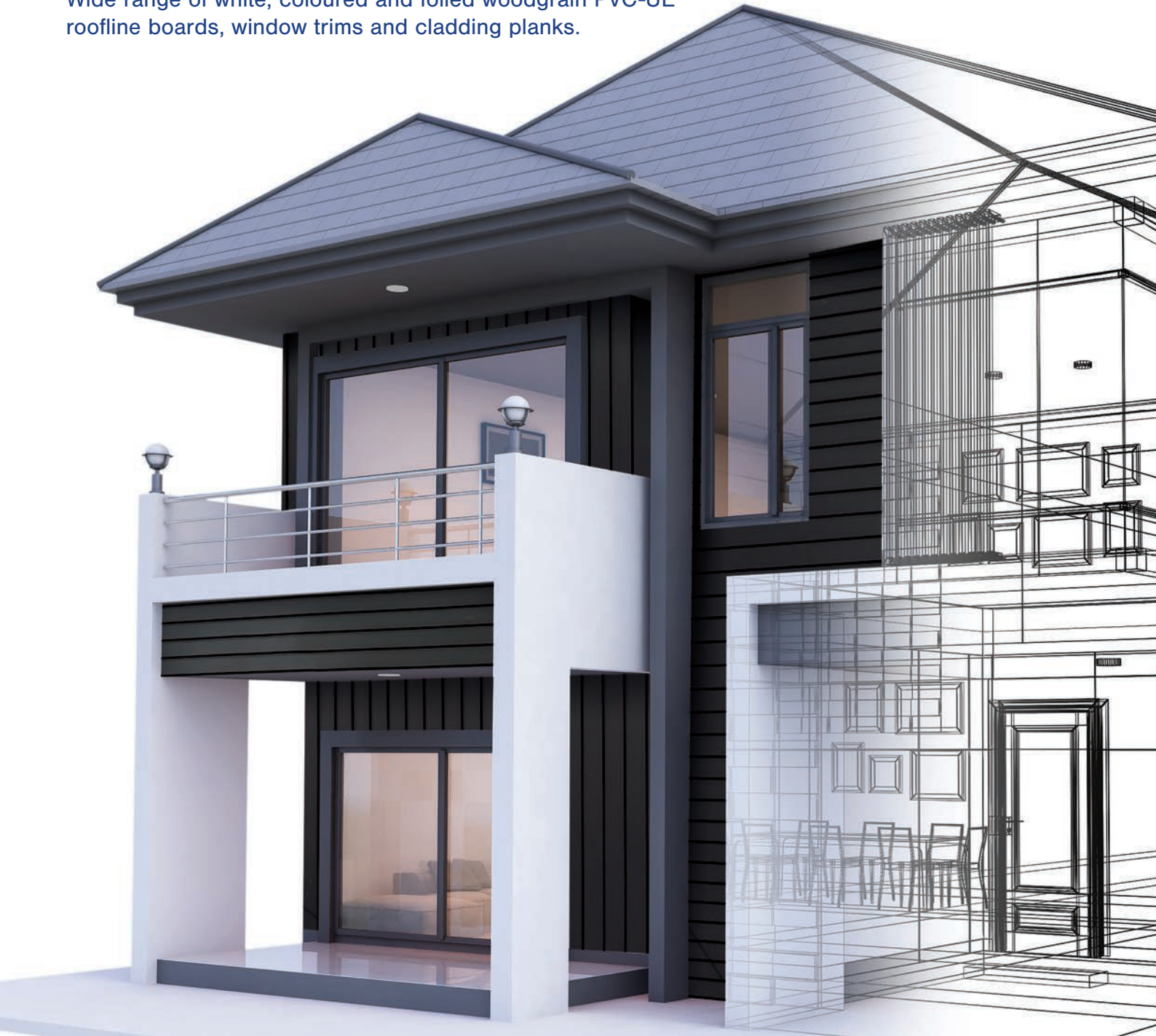


Product Overview

Offering a complete solution[®]

Wide range of white, coloured and foiled woodgrain PVC-UE
roofline boards, window trims and cladding planks.



Fascias | Soffits | Cladding | Windowboards | Architraves | Decking



www.kbp.co.uk

KESTREL[®]
rely on it

Our Mission Statement

"To be a leading supplier and manufacturer of plastic products to the building industry."

Customer Charter

Our Customer Charter sets out the minimum expectations that we, as a business, endeavour to achieve when building relations with our customers and suppliers.

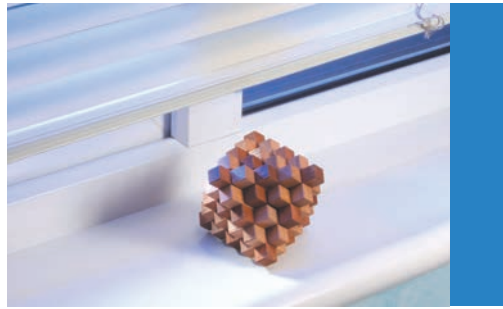
- We have a customer focused approach and a clear commitment to being and offering the very best - in products and service.
- Our committed and knowledgeable Customer Services Team will deal with all correspondence in a polite and respectful manner.
- We will aim to respond to all enquiries within 48 hours.
- All our customers are provided with set delivery days, where we aim to supply stock products within agreed timescale.
- Our specialised fleet of vehicles along with fully trained drivers, provides a dedicated service which meets customers' needs within the UK.
- Our estimating team who have over 20 years' experience, will do their best to turnaround enquiries under seven days and 99.5% accuracy on drawings or pricing bill of quantities.
- All at Kestrel-BCE are committed to the care of the environment and the prevention of pollution.
- The organisation seeks to minimise waste, promote recycling, reduce energy consumption, reduce harmful emissions and, where possible, to work with suppliers who themselves have sound environmental policies.
- We produce all products to ISO9001 quality and within an environmental management system which satisfies the requirements of BS EN ISO 14001:2004. We are independently certified to BES 6001
- We are confident in our products allowing us to offer the guarantees below:

Think Customer. Everyone. Every Day

Contents



Roofline **Page 4**



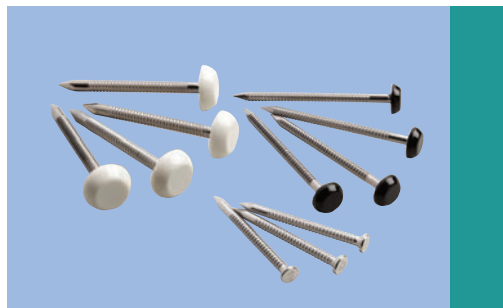
Windowline **Page 30**



Trims **Page 39**



Cladding **Page 43**



Fixings **Page 51**

NEW



Decking
Dekboard **Page 53**
Reverse Dekboard **Page 69**

K22/Bullnosed Fascia Boards x 22mm

- 22mm load-bearing fascia board with a 25mm bullnose and soffit groove
- Allows direct fixing of rainwater systems without needing timber support

K22/250

Available in the following colours:

Brilliant
White
BWBlackgrain
BGSherwood
SGRosewood
PG

Whites: Finish will vary from catalogue, please request a sample.

| Product Code | Description | White | | Woodgrains | | | | |
|--------------|---------------------------|-----------|--------------------|------------|---------------|-------------|---|-------------|
| | | Pack Qty | Brilliant White BW | Pack Qty | Blackgrain BG | Sherwood SG | | Rosewood PG |
| K22/150 | 150mm x 22mm | 2 x 5m | ✓ | 1 x 5m | ✓ | ✓ | ✓ | |
| K22/175 | 175mm x 22mm | 2 x 5m | ✓ | 1 x 5m | ✓ | ✓ | ✓ | |
| K22/200 | 200mm x 22mm | 2 x 5m | ✓ | 1 x 5m | ✓ | ✓ | ✓ | |
| K22/225 | 225mm x 22mm | 2 x 5m | ✓ | 1 x 5m | ✓ | ✓ | ✓ | |
| K22/250 | 250mm x 22mm | 2 x 5m | ✓ | 1 x 5m | ✓ | ✓ | ✓ | |
| K22/300 | 300mm x 22mm | 1 x 5m | ✓ | 1 x 5m | ✓ | ✓ | ✓ | |
| K22/355 | 355mm x 22mm (Double End) | 1 x 5m | ✓ | | | | | |
| K22/405 | 405mm x 22mm (Double End) | 1 x 5m | ✓ | 1 x 5m | ✓ | ✓ | ✓ | |
| K22/405/1.25 | 405mm x 22mm (Double End) | 1 x 1.25m | ✓ | 1 x 1.25m | ✓ | ✓ | ✓ | |

KB16/Bullnosed Fascia Boards x 16mm

- 16mm load-bearing fascia board with a 25mm bullnose and soffit groove
- Allows direct fixing of rainwater systems without needing timber support.



KB16/150

Available in the following colour:



Brilliant
White
BW

Whites: Finish will vary from catalogue, please request a sample.

← White →

| Product Code | Description | Pack Qty | Brilliant White BW |
|--------------|---------------------------|----------|--------------------|
| KB16/150 | 150mm x 16mm | 2 x 5m | ✓ |
| KB16/175 | 175mm x 16mm | 2 x 5m | ✓ |
| KB16/200 | 200mm x 16mm | 2 x 5m | ✓ |
| KB16/225 | 225mm x 16mm | 2 x 5m | ✓ |
| KB16/250 | 250mm x 16mm | 2 x 5m | ✓ |
| KB16/405 | 405mm x 16mm (Double End) | 1 x 5m | ✓ |

K22/ KB16/ Accessories - Bullnosed Fascia



Whites: Finish will vary from catalogue, please request a sample.

K22 & KB16 Accessories Bullnosed Fascias

← White →

| Product Code | Description | Pack Qty | Brilliant White BW |
|--------------|------------------------------------|----------|--------------------|
| K22/693/050 | 50mm x 25mm End Cap | 10 Pairs | ✓ |
| K22/694/250 | 250mm x 25mm End Cap | 10 Pairs | ✓ |
| K22/695/250 | 250mm x 30mm Cover Joint | 10 | ✓ |
| K22/696/250 | 250mm x 40mm External Corner Joint | 10 | ✓ |
| K22/696/600 | 600mm x 40mm External Corner Joint | 5 | ✓ |
| K22/697/250 | 250mm Internal Corner Joint | 10 | ✓ |

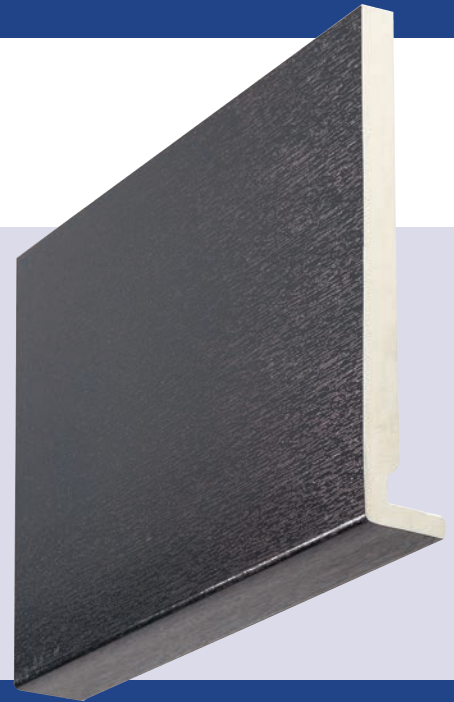
K22 Foiled Accessories Bullnosed Fascia

← Woodgrains →

| Product Code | Description | Pack Qty | Blackgrain | Sherwood | Rosewood |
|--------------|--|----------|------------|----------|----------|
| | | | BG | SG | PG |
| K22/694/250 | 25mm x 250mm End Cap | 1 Pair | ✓ | ✓ | ✓ |
| K22/695/250 | 250mm x 40mm Cover Joint | 1 | ✓ | ✓ | ✓ |
| K22/696/250 | 250mm x 60mm External Corner Joint | 1 | ✓ | ✓ | ✓ |
| K22/697/250 | 250mm Internal Corner Joint | 1 | ✓ | ✓ | ✓ |
| K22/698/250 | 250mm x 60mm External Corner Extension | 1 | ✓ | ✓ | ✓ |
| K22/699/250 | 250mm x 40mm Cover Joint Extension | 1 | ✓ | ✓ | ✓ |

K16/Square Fascia Boards x 16mm

- 16mm load-bearing, square fascia board with 36mm return leg.
- Allows direct fixing of rainwater systems without needing timber support.



K16/200

Available in the following colours:



Whites: Finish will vary from catalogue, please request a sample.

| Product Code | Description | Pack Qty | ← White → | Woodgrains | | | | | Premiergrain | | | | Colours → | |
|--------------|----------------------------------|-----------|--------------------|-------------|---------------|-------------|-------------|----------------|---------------|---------------------|------------------|----------------------|------------------|--|
| | | | Brilliant White BW | Mahogany WG | Blackgrain BG | Sherwood SG | Rosewood PG | Creamgrain CRG | Irish Oak IOG | Anthracite Grey AGG | Agate Grey GAG | Anthracite Grey 7016 | Black BL | |
| K16/150 | 150mm x 16mm Square | 2 x 5m | ✓ | ✓ | ✓ | ✓ | ✓ | | | ✓ | | ✓ ^{NEW} | ✓ ^{NEW} | |
| K16/175 | 175mm x 16mm Square | 2 x 5m | ✓ | ✓ | ✓ | ✓ | ✓ | | | ✓ | ✓ ^{NEW} | ✓ ^{NEW} | ✓ ^{NEW} | |
| K16/200 | 200mm x 16mm Square | 2 x 5m | ✓ | ✓ | ✓ | ✓ | ✓ | ✓ | ✓ | ✓ | | ✓ ^{NEW} | ✓ ^{NEW} | |
| K16/225 | 225mm x 16mm Square | 2 x 5m | ✓ | ✓ | ✓ | ✓ | ✓ | | | ✓ | ✓ ^{NEW} | ✓ ^{NEW} | ✓ ^{NEW} | |
| K16/250 | 250mm x 16mm Square | 2 x 5m | ✓ | ✓ | ✓ | ✓ | ✓ | | | ✓ | | ✓ ^{NEW} | ✓ ^{NEW} | |
| K16/355 | 350mm x 16mm Square (Double End) | 1 x 5m | ✓ | | | | | | | | | | | |
| K16/405 | 400mm x 16mm Square (Double End) | 1 x 5m | ✓ | ✓ | ✓ | ✓ | ✓ | ✓ | ✓ | ✓ | ✓ ^{NEW} | ✓ ^{NEW} | ✓ ^{NEW} | |
| K16/405/1.25 | 400mm x 16mm Square (Double End) | 1 x 1.25m | ✓ | | ✓ | | | | | ✓ | | | | |

* Made To Order Up to three week lead time. Minimum order quantity may apply.

For corners, joints and end caps see pages 10 and 11

KF16/ Flush Fascia Boards x 16mm



KF16/649/250



KF16/650/250



KF16/665/250

KF16/250



Available in the following colours:



Brilliant
White
BW



Blackgrain
BG



Rosewood
PG

Whites: Finish will vary from catalogue, please request a sample.

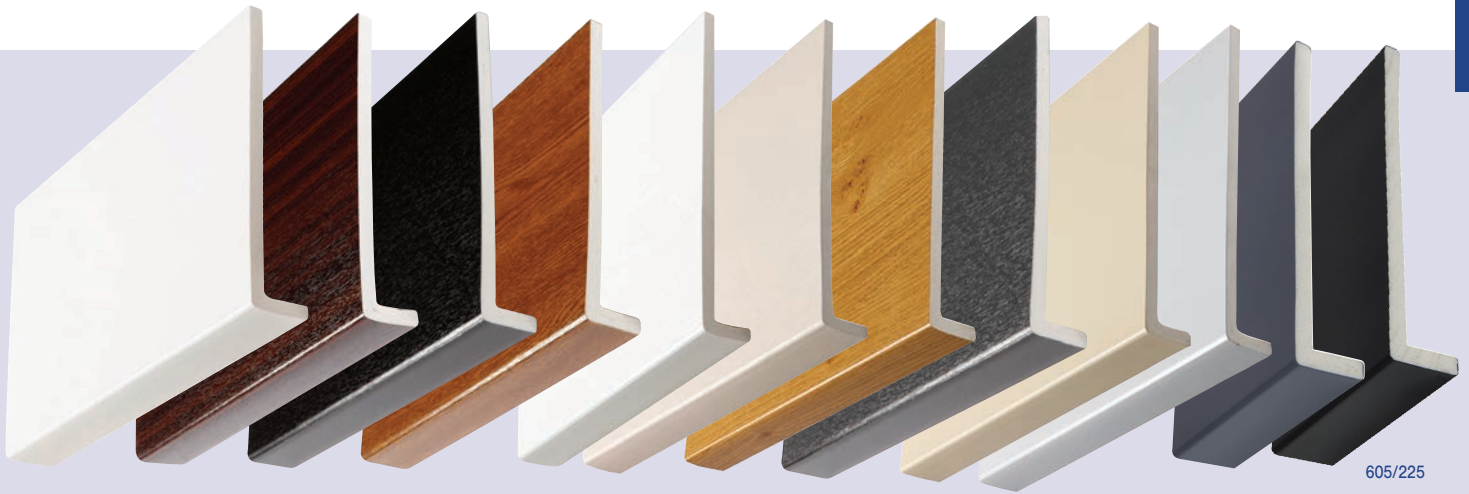
| Product Code | Description | White | | Woodgrains | | |
|--------------|---------------------------------|----------|--------------------|------------|---------------|-------------|
| | | Pack Qty | Brilliant White BW | Pack Qty | Blackgrain BG | Rosewood PG |
| KF16/150 | 150mm x 16mm Flush | 2 x 5m | ✓ | 2 x 5m | ✓ | ✓ |
| KF16/175 | 175mm x 16mm Flush | 2 x 5m | ✓ | | | |
| KF16/200 | 200mm x 16mm Flush | 2 x 5m | ✓ | | | |
| KF16/225 | 225mm x 16mm Flush | 2 x 5m | ✓ | | | |
| KF16/250 | 250mm x 16mm Flush | 2 x 5m | ✓ | 2 x 5m | | ✓* |
| KF16/405 | 405mm x 16mm Flush (Double End) | 1 x 5m | ✓ | | | |

Accessories for KF16 - Flush Fascia Boards

| | | | | | | |
|--------------|----------------------------|----|---|--|----|--|
| KF16/649/250 | 250mm x 40mm Joint Trim | 10 | ✓ | | | |
| KF16/650/250 | 250mm Internal Corner Trim | 10 | ✓ | | | |
| KF16/665/250 | 250mm x 16mm End Cap | 10 | ✓ | | ✓* | |

* **Made To Order** Up to three week lead time. Minimum order quantity may apply.

605/Reveal Liner - Fascia Capping Boards x 9mm



605/225

Available in the following colours:

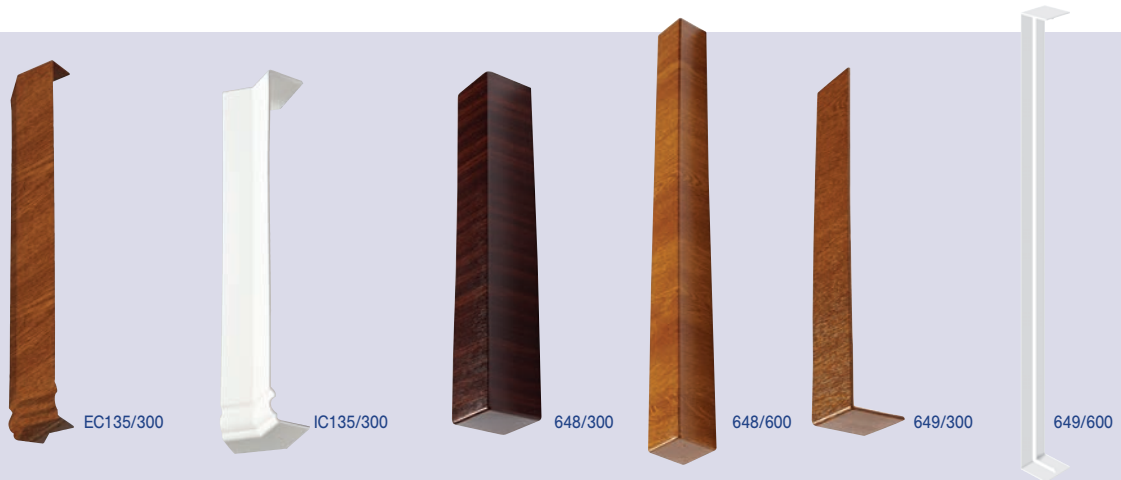


Whites: Finish will vary from catalogue, please request a sample.

| Product Code | Description | Pack Qty | White | | | | | Woodgrains | | | | | Premiergrain | | | | Colours | | | |
|--------------|--|----------------------------|--------------------|-------------|---------------|-------------|-------------|----------------|----------------|---------------|---------------------|----------------|--------------|-----------------|----------------------|----------|---------|--|--|--|
| | | | Brilliant White BW | Mahogany WG | Blackgrain BG | Sherwood SG | Rosewood PG | Whitegrain WHG | Creamgrain CRG | Irish Oak IOG | Anthracite Grey AGG | Agate Grey GAG | Sand 1015 | Light Grey 7035 | Anthracite Grey 7016 | Black BL | | | | |
| 605/100 | 110mm x 9mm | 2 x 5m | ✓ | | | | | | | | | | | | | | | | | |
| 605/125 | 135mm x 9mm | 2 x 5m | ✓ | | | | | | | | | | | | | | | | | |
| 605/150 | 160mm x 9mm | 2 x 5m | ✓ | ✓ | ✓ | ✓ | ✓ | | | | ✓ | | | | | | | | | |
| 605/175 | 185mm x 9mm 175mm x 9mm | 2 x 5m 2 x 5m | ✓ | ✓ | ✓ | ✓ | ✓ | | | | ✓ | | ✓ | ✓* | NEW | NEW | | | | |
| 605/200 | 210mm x 9mm 200mm x 9mm | 2 x 5m 2 x 5m | ✓ | ✓ | ✓ | ✓ | ✓ | | | | ✓ | ✓* | ✓ | ✓ | NEW | NEW | | | | |
| 605/225 | 235mm x 9mm 225mm x 9mm | 2 x 5m 2 x 5m | ✓ | ✓ | ✓ | ✓ | ✓ | ✓ | ✓ | ✓ | ✓ | ✓* | ✓* | ✓* | NEW | NEW | | | | |
| 605/250 | 260mm x 9mm | 2 x 5m | ✓ | ✓ | ✓ | ✓ | ✓ | | | | ✓ | | | | | | | | | |
| 605/300 | 310mm x 9mm | 2 x 5m | ✓ | ✓ | ✓ | ✓ | ✓ | | | | ✓ | ✓* | | | | | | | | |
| 605/405 | 415mm x 9mm 1 x 5m 405mm x 9mm 2 x 5m | 2 x 5m 1 x 5m 2 x 5m | ✓ | ✓ | ✓ | ✓ | ✓ | | | | ✓ | ✓* | | | NEW | NEW | | | | |
| 605/405/1.25 | 415mm x 9mm | 1 x 1.25m | ✓ | | ✓ | | | | | | ✓ | | | | | | | | | |
| 605/450 | 450mm x 9mm | 1 x 5m | ✓ | | | | | | | | | | | | | | | | | |
| 605/600 | 605mm x 9mm | 1 x 5m | ✓ | | | | | | | | | | | | | | | | | |

* Made To Order Up to three week lead time. Minimum order quantity may apply.

K16 - KF16 and 605/ Accessories - Square Edge Fascias



Available in the following colours:



Whites: Finish will vary from catalogue, please request a sample.

| Product Code | Description | Pack Qty | White | | Woodgrains | | | | | Premiergrain | | | Colours | |
|--------------|--|----------|--------------------|-------------|---------------|-------------|-------------|----------------|---------------|---------------------|----------------|----------------------|----------|-----|
| | | | Brilliant White BW | Mahogany WG | Blackgrain BG | Sherwood SG | Rosewood PG | Creamgrain CRG | Irish Oak IOG | Anthracite Grey AGG | Agate Grey GAG | Anthracite Grey 7016 | Black BL | |
| EC135/300 | External 135° Corner Joint (D/E Square / Ogee) | 5 | ✓ | ✓ | ✓ | ✓ | ✓ | | | ✓ | | | | |
| IC135/300 | Internal 135° Corner Joint (D/E Square / Ogee) | 5 | ✓ | ✓ | ✓ | ✓ | ✓ | | | | | | | |
| 648/300 | 300mm x 40mm Slimline External Corner Joint | 10 5 | ✓ | ✓ | ✓ | ✓ | ✓ | ✓ | ✓ | ✓ | ✓ | ✓ | NEW | NEW |
| 648/600 | 600mm x 40mm Slimline External Corner Joint | 5 | ✓ | ✓ | ✓ | ✓ | ✓ | ✓ | ✓ | ✓ | ✓ | ✓ | NEW | NEW |
| 649/300 | 300mm x 40mm Slimline Cover Joint | 10 5 | ✓ | ✓ | ✓ | ✓ | ✓ | ✓ | ✓ | ✓ | ✓ | ✓ | NEW | NEW |
| 649/600 | 600mm x 40mm Slimline Cover Joint | 5 | ✓ | | | | | | | | | | NEW | NEW |

* Made To Order Up to three week lead time. Minimum order quantity may apply.

K16 - KF16 and 605/Accessories - Square Edge Fascias



Available in the following colours:



Whites: Finish will vary from catalogue, please request a sample.

| Product Code | Description | Pack Qty | White | | | | | Woodgrains | | | | | Premiergrain | | | | Colours | | | |
|--------------|--|----------|--------------------|-------------|---------------|-------------|-------------|-----------------|-----------------|---------------|---------------------|----------------|--------------|-----------------|----------------------|----------|---------|--|--|--|
| | | | Brilliant White BW | Mahogany WG | Blackgrain BG | Sherwood SG | Rosewood PG | White grain WHG | Cream grain CRG | Irish Oak IOG | Anthracite Grey AGG | Agate Grey GAG | Sand 1015 | Light Grey 7035 | Anthracite Grey 7016 | Black BL | | | | |
| 650/300 | 300mm Internal Corner Joint | 10 5 | ✓ | ✓ | ✓ | ✓ | ✓ | | ✓ | ✓ | ✓ | NEW ✓ | ✓ | ✓ | NEW ✓ | NEW ✓ | | | | |
| 665/050 | 50mm Fascia End Cap for K16 / 605 | 10 | ✓ | | | | | | | | | | | | | | | | | |
| 665/250 | 250mm Fascia End Cap for K16 / 605 | 10 | ✓ | ✓ | ✓ | ✓ | ✓ | | ✓ | ✓* | ✓ | | | | | ✓* | | | | |
| 448/300 | 300mm x 60mm Premium External Corner Joint & Upstand | 10 5 | ✓ | | ✓* | ✓ | | ✓* | | | ✓ | | ✓ | ✓* | | | | | | |
| 448/EXT | 250mm x 60mm Premium External Corner Extension | 10 | ✓ | | | | | | | | | | | | | | | | | |
| 449/300 | 300mm x 50mm Premium Cover Joint With Upstand | 10 5 | ✓ | | ✓* | ✓* | | ✓* | | | ✓ | | ✓ | ✓* | | | | | | |

* Made To Order Up to three week lead time. Minimum order quantity may apply.

505/Reveal Liner - Long Leg Boards x 8mm

- 8mm square edge, fascia capping board with 44mm return leg
- Requires a new timber sub-fascia when being used as a fascia board

505/150

Available in the following colour:



Brilliant
White
BW

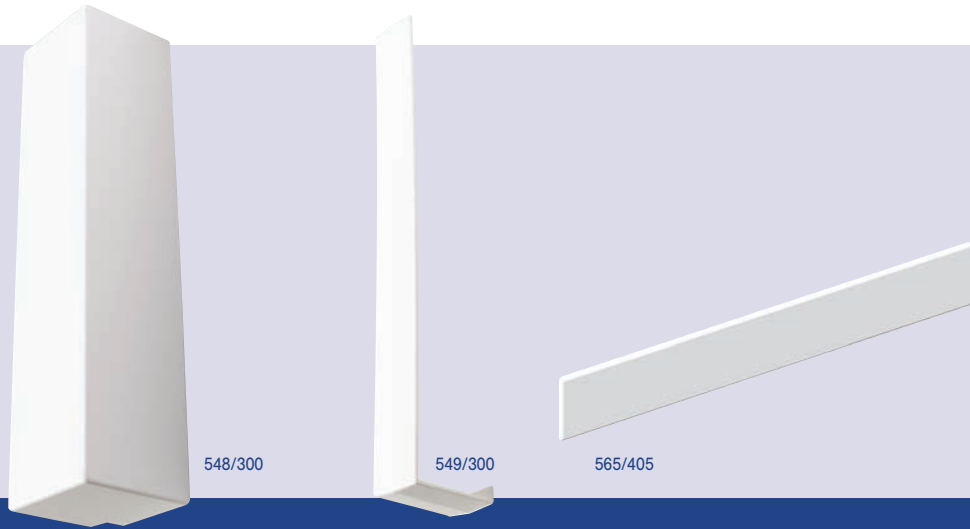


Whites: Finish will vary from catalogue, please request a sample.

← White →

| Product Code | Description | Pack Qty | Brilliant White BW |
|--------------|-----------------------------------|----------|--------------------|
| 505/150 | 150mm x 8mm Long Leg | 2 x 5m | ✓ |
| 505/175 | 175mm x 8mm Long Leg | 2 x 5m | ✓ |
| 505/200 | 200mm x 8mm Long Leg | 2 x 5m | ✓ |
| 505/225 | 225mm x 8mm Long Leg | 2 x 5m | ✓ |
| 505/250 | 250mm x 8mm Long Leg | 2 x 5m | ✓ |
| 505/355 | 355mm x 8mm Long Leg (Double End) | 2 x 5m | ✓ |
| 505/405 | 405mm x 8mm Long Leg (Double End) | 2 x 5m | ✓ |

505/ Accessories - Reveal Liner - Long Leg x 8mm



Available in the following colour:



Brilliant
White
BW

Whites: Finish will vary from catalogue, please request a sample.

← White →

| Product Code | Description | Pack Qty | Brilliant White BW |
|--------------|----------------------------------|----------|--------------------|
| 548/300 | 300mm x 60mm Long Leg Ext Corner | 10 | ✓ |
| 549/300 | 300mm x 30mm Long Leg Cover | 10 | ✓ |
| 565/405 | 405mm x 44mm Long Leg End Cap | 10 | ✓ |

018/Ogee Fascia Boards x 18mm

- 18mm load bearing, Ogee fascia board with 42mm return leg
- Allows direct fixing of rainwater systems without needing timber support

018/175



018/405



Available in the following colour:

Brilliant
White
BW

Whites: Finish will vary from catalogue, please request a sample.

← White →

| Product Code | Description | Pack Qty | Brilliant White BW |
|--------------|---------------------------|----------|--------------------|
| 018/150 | 150mm x 18mm | 2 x 5m | ✓ |
| 018/175 | 175mm x 18mm | 2 x 5m | ✓ |
| 018/200 | 200mm x 18mm | 2 x 5m | ✓ |
| 018/225 | 225mm x 18mm | 2 x 5m | ✓ |
| 018/250 | 250mm x 18mm | 2 x 5m | ✓ |
| 018/405 | 405mm x 18mm (Double End) | 1 x 5m | ✓ |

018/Accessories - Ogee Fascia x 18mm



Available in the following colour:



Brilliant White
BW

Whites: Finish will vary from catalogue, please request a sample.

← White →

| Product Code | Description | Pack Qty | Brilliant White BW |
|--------------|------------------------------------|----------|--------------------|
| 0180/300 | 300mm Internal Corner Joint | 5 | ✓ |
| 0188/300 | 300mm x 50mm External Corner Joint | 5 | ✓ |
| 0189/300 | 300mm x 40mm Cover Joint | 5 | ✓ |

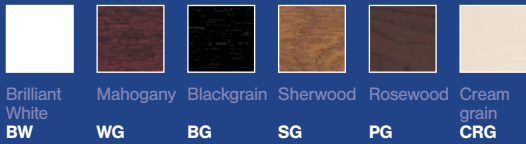
008/Ogee Fascia Boards x 8mm

- 8mm Ogee fascia board with 35mm return leg
- Requires a new timber sub-fascia when being used as a fascia board



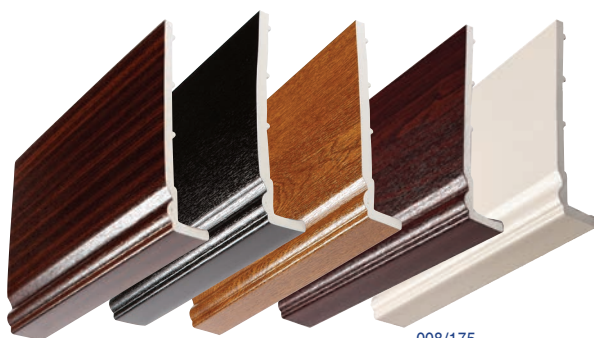
008/175

Available in the following colours:

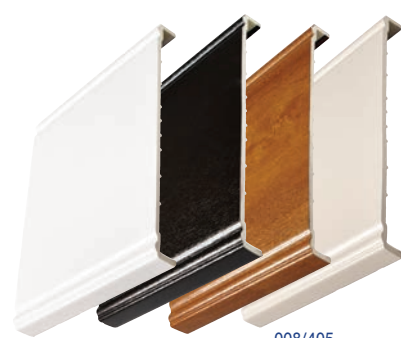


Whites: Finish will vary from catalogue, please request a sample.

| Product Code | Description | White | | Woodgrains | | | | | Premiergrain |
|--------------|--------------------------|----------|--------------------|------------|-------------|---------------|-------------|-------------|----------------|
| | | Pack Qty | Brilliant White BW | Pack Qty | Mahogany WG | Blackgrain BG | Sherwood SG | Rosewood PG | Creamgrain CRG |
| 008/150 | 150mm x 8mm | 2 x 5m | ✓ | | | | | | |
| 008/175 | 175mm x 8mm | 2 x 5m | ✓ | 2 x 5m | ✓ | ✓ | ✓ | ✓ | ✓ |
| 008/200 | 200mm x 8mm | 2 x 5m | ✓ | 2 x 5m | ✓ | ✓ | ✓ | ✓ | ✓ |
| 008/225 | 225mm x 8mm | 2 x 5m | ✓ | 2 x 5m | ✓ | ✓ | ✓ | ✓ | ✓ |
| 008/250 | 250mm x 8mm | 2 x 5m | ✓ | | | | | | |
| 008/405 | 405mm x 8mm (Double End) | 2 x 5m | ✓ | 2 x 5m | ✓ | ✓ | ✓ | ✓ | ✓ |



008/175



008/405

008/ Accessories - Ogee Fascia x 8mm



Available in the following colours:



Whites: Finish will vary from catalogue, please request a sample.

| Product Code | Description | White | | Woodgrains | | | | | Premiergrain |
|--------------|------------------------------------|----------|--------------------|------------|-------------|---------------|-------------|-------------|----------------|
| | | Pack Qty | Brilliant White BW | Pack Qty | Mahogany WG | Blackgrain BG | Sherwood SG | Rosewood PG | Creamgrain CRG |
| 0089/300 | 300mm x 40mm Cover Joint | 10 | ✓ | 5 | ✓ | ✓ | ✓ | ✓ | ✓ |
| 0088/300 | 300mm x 50mm External Corner Joint | 10 | ✓ | | | | | | |
| 0080/300 | 300mm Internal Corner Joint | 10 | ✓ | | | | | | |
| 0088/135 | 300mm 135° External Corner Joint | 5 | ✓ | 5 | | | | | |

Image Range/Waveline x 16mm



VCREST



VWAVE



K714



K714/060

Available in the following colours:



Brilliant
White
BW



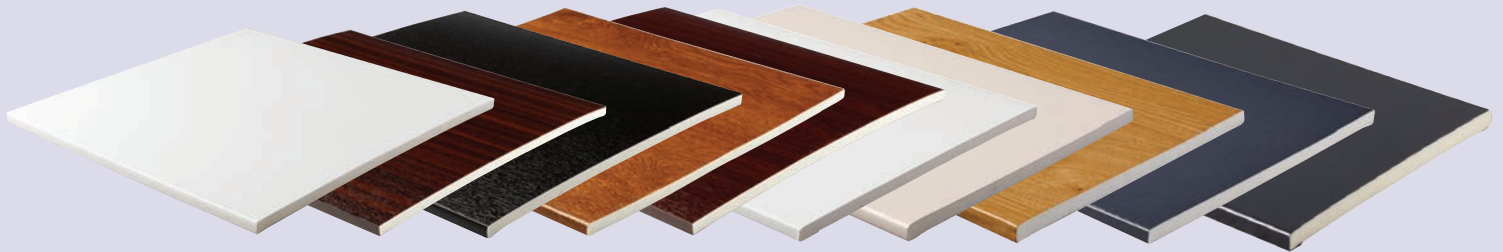
White
W



Whites: Finish will vary from catalogue, please request a sample.

| Product Code | Description | Pack Qty | Whites | | |
|--------------------|-----------------------------|----------|------------------------------|-------------------|--|
| | | | Brilliant White BW | White W | |
| Image Range | | | | | |
| V-CREST | 220mm x 16mm Convex Ornate | 2 x 5m | ✓ | | |
| V-WAVE | 220mm x 16mm Concave Ornate | 2 x 5m | ✓ | | |
| 2D Finials | | | | | |
| K714 | 350mm x 95mm 2D Finial | 10 | ✓ | | |
| K714/060 | 310mm x 60mm 2D Finial | 10 | ✓ | | |

603/Soffit-General Purpose Boards x 9mm



603

Available in the following colours:



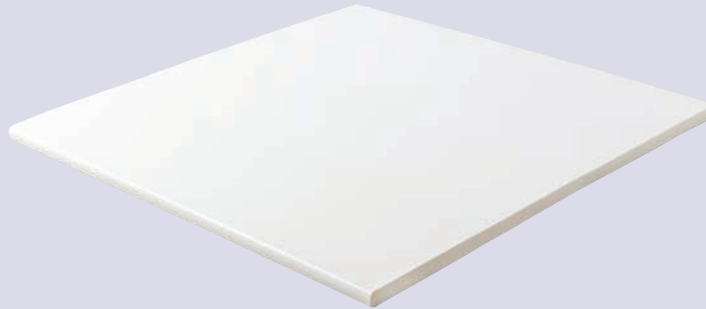
Whites: Finish will vary from catalogue, please request a sample.

| Product Code | Description | Pack Qty | White | | Woodgrains | | | | | Premiergrain | | | | Smoothgrain | | | Colours | |
|--------------|--------------------|------------------|-----------------------|----------------|------------------|----------------|----------------|--------------------|--------------------|------------------|------------------------|-------------------------------|--------------------------|-------------------|-------------------------|-------------|---------|-----|
| | | | Brilliant White BW | Mahogany WG | Blackgrain BG | Sherwood SG | Rosewood PG | White grain WHG | Cream grain CRG | Irish Oak IOG | Anthracite Grey AGG | Anthracite Smooth Grey ASG | Slate Smooth Grey SSG | Agate Grey GAG | Anthracite Grey 7016 | Black BL | | |
| 603/100 | 100mm Plain Soffit | 5 x 5m 2 x 5m | ✓ | ✓ | ✓ | ✓ | ✓ | | | | | | | | | | | |
| 603/125 | 125mm Plain Soffit | 5 x 5m | ✓ | | | | | | | | | | | | | | | |
| 603/150 | 150mm Plain Soffit | 5 x 5m 2 x 5m | ✓ | ✓ | ✓ | ✓ | ✓ | | | ✓ | ✓ | ✓ | ✓ | ✓ | NEW | NEW | NEW | |
| 603/175 | 175mm Plain Soffit | 5 x 5m 2 x 5m | ✓ | ✓ | ✓ | ✓ | ✓ | | | | | | | | | NEW | NEW | |
| 603/200 | 200mm Plain Soffit | 5 x 5m 2 x 5m | ✓ | ✓ | ✓ | ✓ | ✓ | | ✓ | ✓ | ✓ | | | | NEW | NEW | NEW | |
| 603/225 | 225mm Plain Soffit | 5 x 5m 2 x 5m | ✓ | ✓ | ✓ | ✓ | ✓ | ✓ | ✓ | ✓ | ✓ | | | | | | | |
| 603/250 | 250mm Plain Soffit | 5 x 5m 2 x 5m | ✓ | ✓ | ✓ | ✓ | ✓ | | | | ✓ | | | | | | | |
| 603/275 | 275mm Plain Soffit | 2 x 5m 2 x 5m | ✓ | | | | ✓ | | | | | | | | | | | |
| 603/300 | 300mm Plain Soffit | 2 x 5m 2 x 5m | ✓ | ✓ | ✓ | ✓ | ✓ | ✓* | ✓ | ✓ | ✓ | | | | ✓ | NEW | NEW | NEW |
| 603/330 | 330mm Plain Soffit | 2 x 5m | ✓ | | | | | | | | | | | | | | | |
| 603/400 | 400mm Plain Soffit | 2 x 5m 2 x 5m | ✓ | ✓ | ✓ | ✓ | ✓ | ✓* | ✓ | ✓ | ✓ | | | | ✓ | NEW | NEW | NEW |
| 603/450 | 450mm Plain Soffit | 1 x 5m | ✓ | | | | | | | | | | | | | | | |
| 603/500 | 500mm Plain Soffit | 1 x 5m | ✓ | | | | | | | | | | | | | | | |
| 603/600 | 600mm Plain Soffit | 1 x 5m | ✓ | | | | | | | | | | | | | | | |

* Made To Order Up to three week lead time. Minimum order quantity may apply.

603/F/Soffit Boards - Two Finished Edges x 9mm

- 9mm multi-purpose board
- Two finished edges



603/300/F

Available in the following colour:



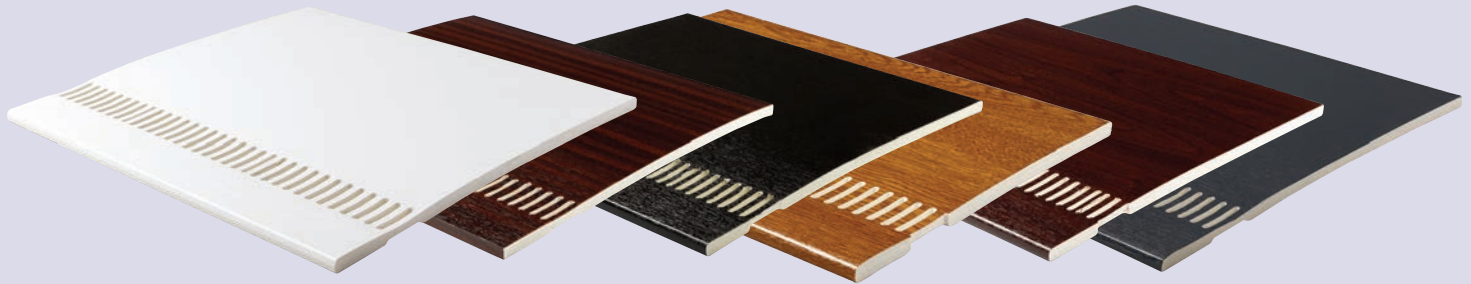
Brilliant
White
BW

Whites: Finish will vary from catalogue, please request a sample.

← White →

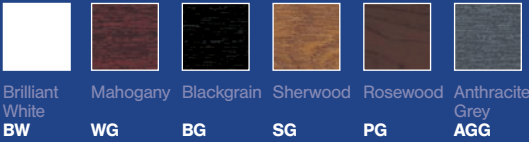
| Product Code | Description | Pack Qty | Brilliant White BW | |
|--------------|--------------------------|----------|--------------------|--|
| 603/100/F | 100mm Two Finished Edges | 5 x 5m | ✓ | |
| 603/150/F | 150mm Two Finished Edges | 5 x 5m | ✓ | |
| 603/175/F | 175mm Two Finished Edges | 5 x 5m | ✓ | |
| 603/200/F | 200mm Two Finished Edges | 5 x 5m | ✓ | |
| 603/300/F | 300mm Two Finished Edges | 2 x 5m | ✓ | |
| 603/400/F | 405mm Two Finished Edges | 2 x 5m | ✓ | |

803/Ventilated Soffit Boards x 9mm (10mm Air Gap)



803/400

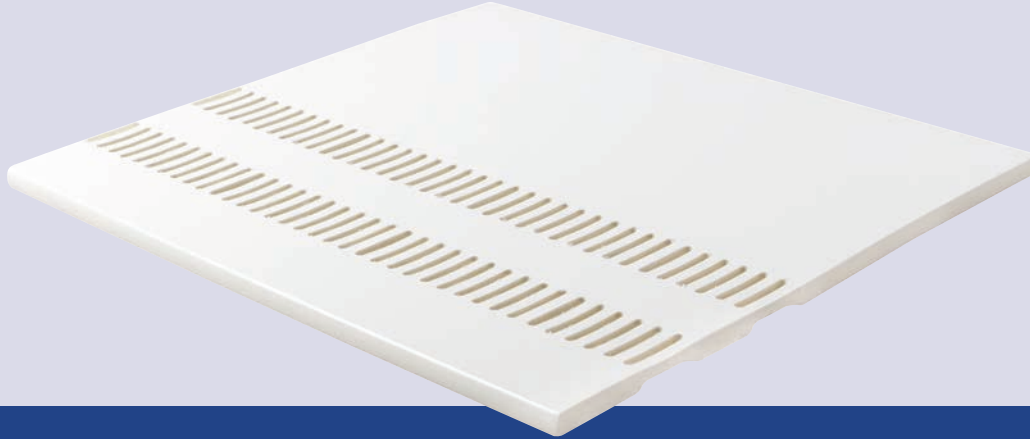
Available in the following colours:



Whites: Finish will vary from catalogue, please request a sample.

| Product Code | Description | White | | Woodgrains | | | | Premiergrain |
|--------------|----------------------|----------|--------------------|------------|-------------|---------------|-------------|--------------|
| | | Pack Qty | Brilliant White BW | Pack Qty | Mahogany WG | Blackgrain BG | Sherwood SG | Rosewood PG |
| 803/100 | 100mm (10mm air gap) | 5 x 5m | ✓ | | | | | |
| 803/150 | 150mm (10mm air gap) | 5 x 5m | ✓ | 2 x 5m | ✓ | ✓ | ✓ | |
| 803/175 | 175mm (10mm air gap) | 5 x 5m | ✓ | | | | | |
| 803/200 | 200mm (10mm air gap) | 5 x 5m | ✓ | 2 x 5m | | ✓ | | ✓ |
| 803/225 | 225mm (10mm air gap) | 5 x 5m | ✓ | 2 x 5m | ✓ | ✓ | ✓ | |
| 803/250 | 250mm (10mm air gap) | 5 x 5m | ✓ | | | | | |
| 803/300 | 300mm (10mm air gap) | 2 x 5m | ✓ | 2 x 5m | ✓ | ✓ | ✓ | ✓ |
| 803/330 | 325mm (10mm air gap) | 2 x 5m | ✓ | | | | | |
| 803/400 | 400mm (10mm air gap) | 2 x 5m | ✓ | 2 x 5m | ✓ | ✓ | ✓ | ✓ |
| 803/450 | 450mm (10mm air gap) | 1 x 5m | ✓ | | | | | |
| 803/500 | 500mm (10mm air gap) | 1 x 5m | ✓ | | | | | |
| 803/600 | 600mm (10mm air gap) | 1 x 5m | ✓ | | | | | |

903/ Double Vented Soffit Boards x 9mm (25mm Air Gap)



903/300

Available in the following colour:



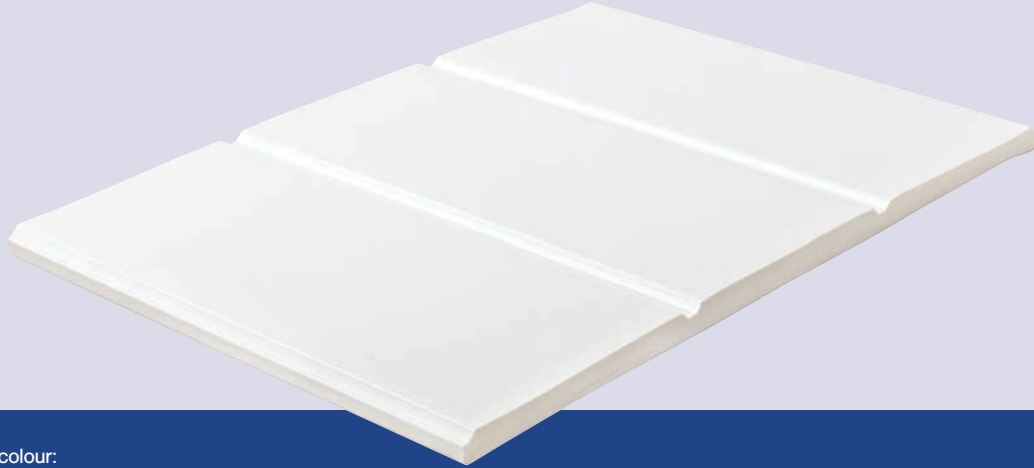
Brilliant
White
BW

Whites: Finish will vary from catalogue, please request a sample.

← White →

| Product Code | Description | Pack Qty | Brilliant White BW |
|--------------|----------------------|----------|--------------------|
| 903/200 | 200mm (25mm air gap) | 5 x 5m | ✓ |
| 903/300 | 300mm (25mm air gap) | 2 x 5m | ✓ |
| 903/400 | 400mm (25mm air gap) | 2 x 5m | ✓ |

690/Simulated T & G x 9mm



690/300

Available in the following colour:



Brilliant
White
BW

Whites: Finish will vary from catalogue, please request a sample.

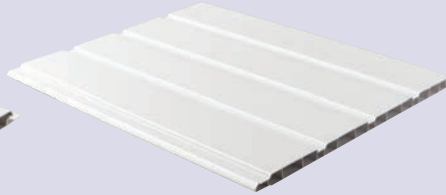
← White →

| Product Code | Description | Pack Qty | Brilliant White BW |
|--------------|---------------------------------------|----------|--------------------|
| 690/300 | 300mm x 9mm Simulated Tongue & Groove | 2 x 5m | ✓ |

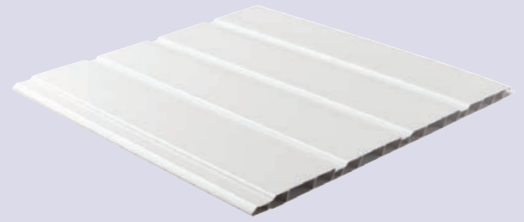
PVC-U Clip Lock/Hollow Soffit



1005



2505



4005

Available in the following colours:



Brilliant White
BW



Sand
1015



Light Grey
7035

Whites: Finish will vary from catalogue, please request a sample.

← White → Colours →

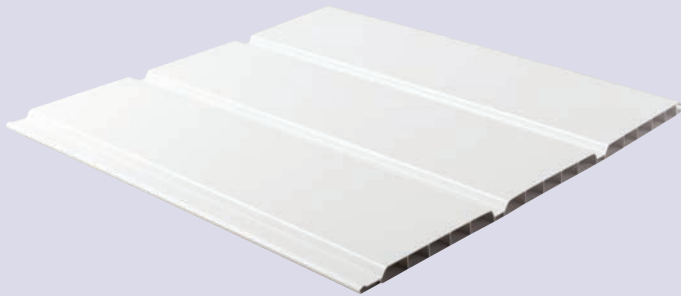
| Product Code | Description | Pack Qty | ← White → Colours → | | |
|--------------|--|----------|------------------------------|---------------------|---------------------------|
| | | | Brilliant White BW | Sand 1015 | Light Grey 7035 |
| 1005 | 100mm PVCU Clip Lock Hollow Soffit | 10 x 5m | ✓ | | |
| 2505 | 250mm x 4 Plank PVCU Clip Lock Hollow Soffit | 5 x 5m | ✓ | ✓ | ✓ |
| 4005 | 400mm x 4 Plank PVCU Clip Lock Hollow Soffit | 4 x 5m | ✓ | | |

NB: Above items cannot be mixed an matched

PVC-U Clip Lock/ Hollow Soffit

PVC-U Push Fit/ Hollow Soffit

→ Simulated Tongue & Groove Hollow Soffit with a hidden fix



HSCCL3005



HOLL3005

Available in the following colour:



White

GW

Available in the following colours:



Brilliant White
BW



Mahogany
WG



Blackgrain
BG



Sherwood
SG



Rosewood
PG



White grain
WHG



Cream grain
CRG



Irish Oak
IOG



Anthracite Grey
AGG



Agate Grey
GAG

NEW

Whites: Finish will vary from catalogue, please request a sample.

Whites: Finish will vary from catalogue, please request a sample.

PVC-U Clip Lock

← White →

| Product Code | Description | Pack Qty | White |
|--------------|------------------------------------|----------|-------|
| HSCCL3005 | 300mm PVCU Clip Lock Hollow Soffit | 5 x 5m | GW ✓ |

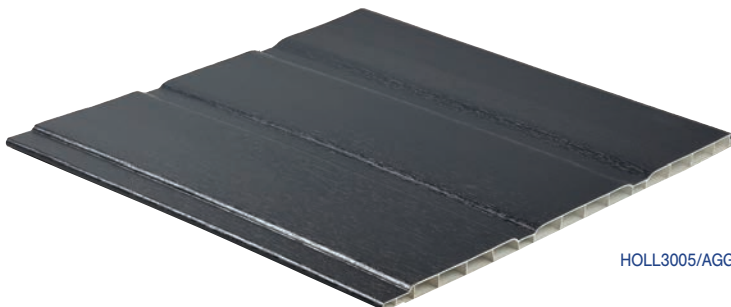
NB: Above item is not compatible with Kestrel PVC-U Push Fit

PVC-U Push Fit

← White → Woodgrains → Premiergrain →

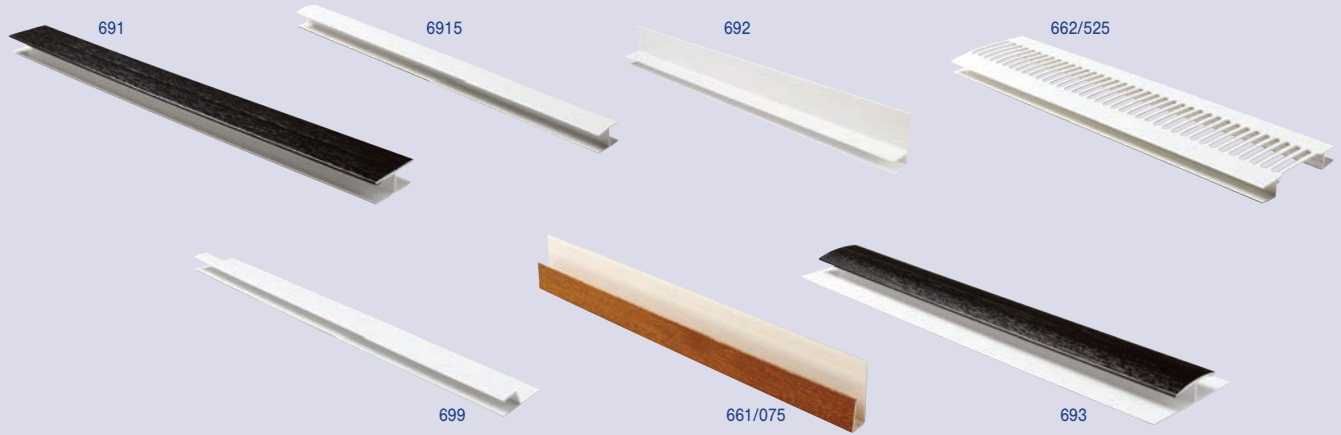
| Product Code | Description | Pack Qty | Brilliant White GW | Pack Qty | Mahogany WG | Blackgrain BG | Sherwood SG | Rosewood PG | Whitegrain WHG | Creamgrain CRG | Irish Oak IOG | Anthracite Grey AGG | Agate Grey GAG |
|--------------|---|----------|--------------------|----------|-------------|---------------|-------------|-------------|----------------|----------------|---------------|---------------------|----------------|
| HOLL3005 | 300mm PVCU Push Fit Hollow Soffit <i>NB: Not compatible with any other hollow soffit</i> | 5 x 5m | ✓ | 5 x 5m | ✓ | ✓ | ✓ | ✓ | ✓ | ✓ | ✓ | ✓ | ✓ |

* Made To Order Up to three week lead time. Minimum order quantity may apply.



HOLL3005/AGG

General Purpose/Accessories - Soffit and General Purpose Board



Available in the following colours:



Whites: Finish will vary from catalogue, please request a sample.

| Product Code /Description | Pack Qty | White | | Woodgrains | | | Premiergrain | | | | | Colours | | | | |
|---|----------|--------------------|-------------|---------------|-------------|-------------|-----------------|-----------------|---------------|---------------------|----------------|-----------|-----------------|---------|----------------------|----------|
| | | Brilliant White BW | Mahogany WG | Blackgrain BG | Sherwood SG | Rosewood PG | White grain WHG | Cream grain CRG | Irish Oak IOG | Anthracite Grey AGG | Agate Grey GAG | Sand 1015 | Light Grey 7035 | Brown B | Anthracite Grey 7016 | Black BL |
| 691 HSection for 603, 803, 903 and Hollow Soffit | 5 x 5m | ✓ | ✓ | ✓ | ✓ | ✓ | | | | ✓ | ✓ | NEW | | ✓ | | |
| 6915 HSection | 5 x 5m | ✓ | | | | | | | | | | | | | | |
| 692 Soffit Channel for 603, 803, 903, 690/300 and Hollow Soffit | 5 x 5m | ✓ | | | | | | | | | | | | | ✓ | NEW |
| 662/525 Soffit Vent Trim (25mm air gap) | 10 x 5m | ✓ | | | | | | | | | | | ✓ | ✓ | ✓ | ✓ |
| 699 Flat Roof Edge Trim x 9mm | 10 x 5m | ✓ | | | | | | | | | | | | | | |
| 661/075 Fixing Chanel x 9mm | 10 x 5m | ✓ | ✓ | ✓ | ✓ | ✓ | ✓ | ✓ | ✓ | ✓ | | | ✓ | ✓ | ✓ | ✓ |
| 693 Panel Joint Trim | 5 x 5m | ✓ | ✓ | ✓ | ✓ | ✓ | ✓ | ✓ | ✓ | ✓ | | | ✓ | ✓ | ✓ | ✓ |

* Made To Order Up to three week lead time. Minimum order quantity may apply.

Dry Verge

NEW

Verge Master



DVLH and DVRH



DVLHS and DVRHS

Verge Wizard



DVU

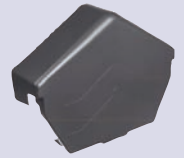


DVUS

Verge Top Ridge Caps



DVRCR



DVRCA

Dry Verge Fixings



DVBEC

Available in the following colours:



Grey Brown Black Stainless Steel
GR **BR** **BL** **S/Steel**

| Product Code | Description | Pack Qty | Colours | | | |
|--------------|-------------|----------|------------|-------------|-------------|----------------------------|
| | | | Grey GR | Brown BR | Black BL | Stainless Steel S/Steel |

VERGE MASTER

Verge Master - Premium Dry Verge System

| Product Code | Description | Pack Qty | Grey GR | Brown BR | Black BL | Stainless Steel S/Steel |
|--------------|--------------------------------------|----------|------------|-------------|-------------|----------------------------|
| DVLH-50 | Verge Master Dry Verge Left | 50 | ✓ | ✓ | ✓ | |
| DVRH-50 | Verge Master Dry Verge Right | 50 | ✓ | ✓ | ✓ | |
| DVLHS-30 | Verge Master Dry Verge Left Starter | 30 | ✓ | ✓ | ✓ | |
| DVRHS-30 | Verge Master Dry Verge Right Starter | 30 | ✓ | ✓ | ✓ | |

VERGE WIZARD

Verge Wizard - Premium Dry Verge System

| Product Code | Description | Pack Qty | Grey GR | Brown BR | Black BL | Stainless Steel S/Steel |
|--------------|--|----------|------------|-------------|-------------|----------------------------|
| DVU-60 | Verge Wizard Dry Verge Universal | 60 | ✓ | ✓ | | |
| DVUS-30 | Verge Wizard Dry Verge Universal Starter | 30 | ✓ | ✓ | | |

Verge Top Ridge Caps

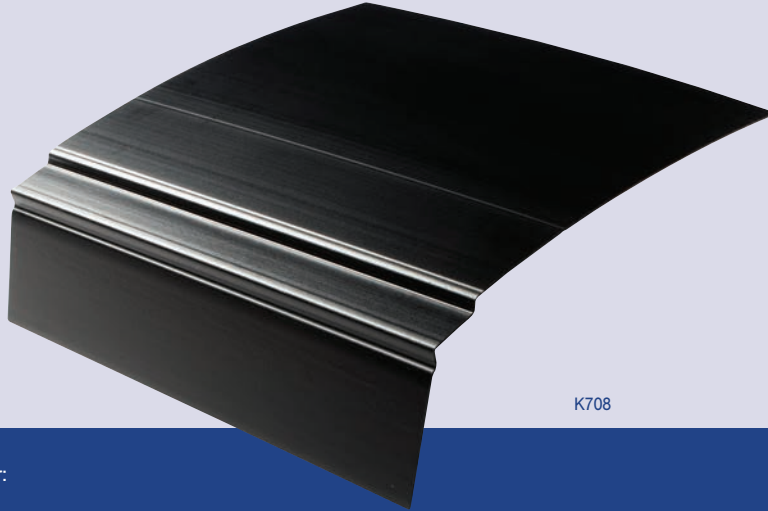
| Product Code | Description | Pack Qty | Grey GR | Brown BR | Black BL | Stainless Steel S/Steel |
|--------------|----------------------------|----------|------------|-------------|-------------|----------------------------|
| DVRCR-10 | Dry Verge Ridge Cap Round | 10 | ✓ | ✓ | ✓ | |
| DVRCA-10 | Dry Verge Ridge Cap Angled | 10 | ✓ | ✓ | ✓ | |

Dry Verge Fixings

| Product Code | Description | Pack Qty | Grey GR | Brown BR | Black BL | Stainless Steel S/Steel |
|--------------|---|----------|------------|-------------|-------------|----------------------------|
| DVBEC50 | Verge Master Dry Verge Batten End Clips | 50 | | | | ✓ |

Kayguard

Eaves Products, Ventilation and Eaves Protection Systems



K708

Available in the following colour:



Black

No Ref

Whites: Finish will vary from catalogue, please request a sample.

← Colours →

| Product Code | Description | Colours | |
|--------------|---|-----------|-----------------|
| | | Pack Qty | Black No Ref |
| K708/150 | K.Shield 263mm Eaves Protection System (1.5m) | 15 x 1.5m | ✓ |

Eaves Protection

Eaves Products, Ventilation and Eaves Protection Systems



Available in the following colours:



White

Black

W

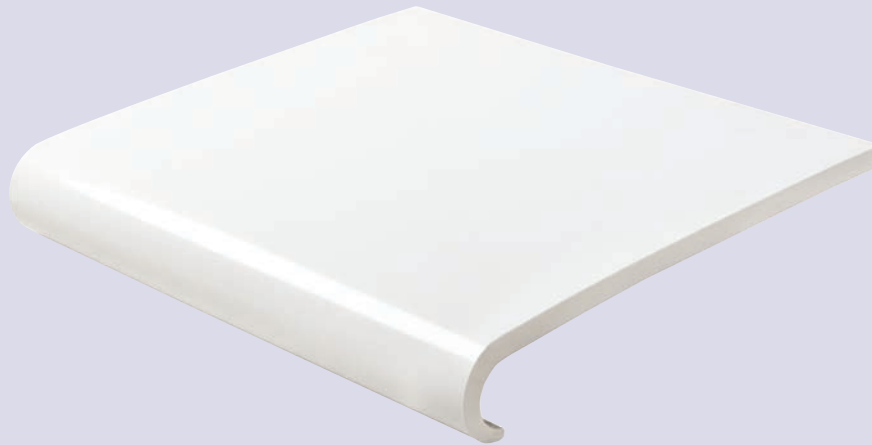
No Ref

Whites: Finish will vary from catalogue, please request a sample.

| Product Code | Description | ← White → | | ← Colours → | |
|--------------|--|-----------|---------|-------------|--------------|
| | | Pack Qty | White W | Pack Qty | Black No Ref |
| UNIOFV | Over Fascia Vent and Eaves Protector 2m x 10mm Venting | | | 6 x 2m | ✓ |
| K712/1000 | K Shield Over Fascia Ventilation Strip (10mm air gap) | | | 25 x 1m | ✓ |
| K712/025 | K.Shield Over Fascia Ventilation Strip (25mm air gap) | | | 5 x 1m | ✓ |
| K713 | K.Shield Bird Comb Filler | | | 50 x 1m | ✓ |
| K716 | Circular Soffit Vent | 50 | ✓ | | ✓ BL |

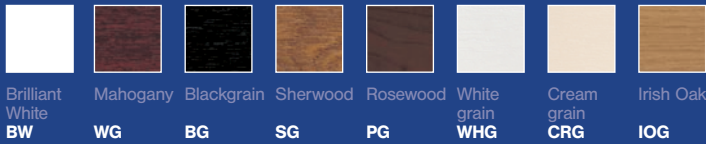
704/ Hockey Window - Fascia Capping Boards x 9mm

→ 9mm hockey windowboard with a 34mm bullnose



704/200

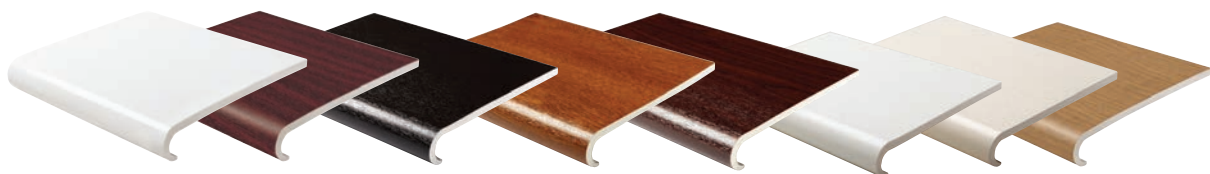
Available in the following colours:



Whites: Finish will vary from catalogue, please request a sample.

| Product Code | Description | White | | Woodgrains | | | | | Premiergrain | | |
|--------------|-------------|----------|--------------------|------------|-------------|---------------|-------------|-------------|----------------|----------------|---------------|
| | | Pack Qty | Brilliant White BW | Pack Qty | Mahogany WG | Blackgrain BG | Sherwood SG | Rosewood PG | Whitegrain WHG | Creamgrain CRG | Irish Oak IOG |
| 704/150 | 150mm x 9mm | 2 x 5m | ✓ | | | | | | | | |
| 704/175 | 175mm x 9mm | 2 x 5m | ✓ | 2 x 5m | ✓ | | ✓ | ✓ | | | |
| 704/200 | 200mm x 9mm | 2 x 5m | ✓ | 2 x 5m | ✓* | ✓ | ✓ | ✓ | ✓ | ✓ | |
| 704/225 | 225mm x 9mm | 2 x 5m | ✓ | 2 x 5m | ✓ | | ✓ | ✓ | ✓ | | ✓ |
| 704/250 | 250mm x 9mm | 2 x 5m | ✓ | 2 x 5m | | | ✓ | | | | |
| 704/300 | 300mm x 9mm | | | 2 x 5m | | | | | ✓ | | ✓* |
| 704/405 | 405mm x 9mm | 1 x 5m | ✓ | 1 x 5m | ✓* | ✓* | ✓ | ✓ | | | |

* Made To Order Up to three week lead time. Minimum order quantity may apply.

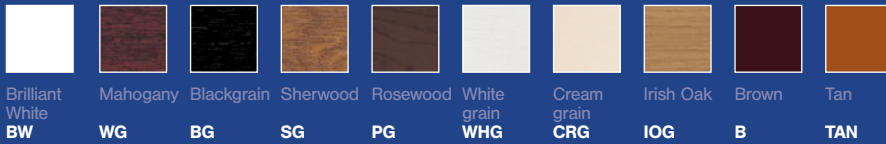


704/ Accessories - Hockey Window x 9mm



Windowline

Available in the following colours:



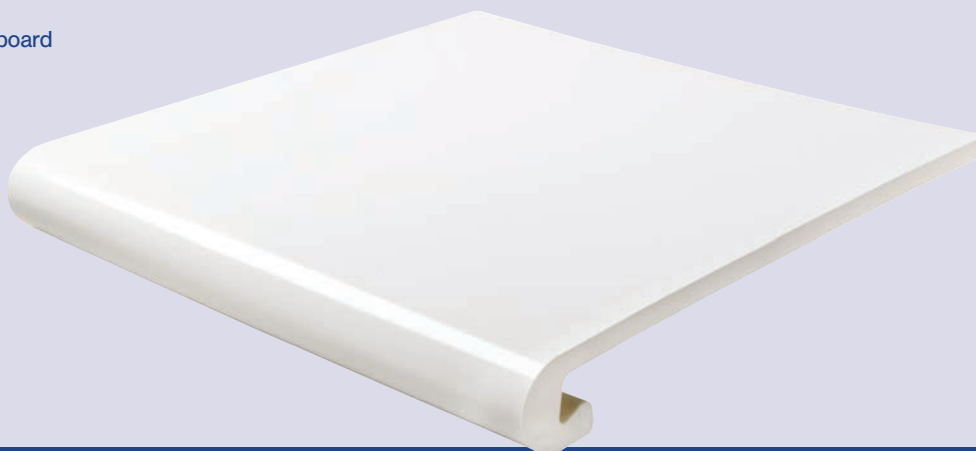
Whites: Finish will vary from catalogue, please request a sample.

| Product Code /Description | Pack Qty | White | | Woodgrains | | | | Premiergrain | | | Colours | | |
|--|----------|--------------------|----------|-------------|---------------|-------------|-------------|----------------|----------------|---------------|----------|---------|---------|
| | | Brilliant White BW | Pack Qty | Mahogany WG | Blackgrain BG | Sherwood SG | Rosewood PG | Whitegrain WHG | Creamgrain CRG | Irish Oak IOG | Pack Qty | Brown B | Tan TAN |
| 748/300 300mm x 46mm External Cover Joint | 10 | ✓ | | | | | | | | | | | |
| 749/300 300mm x 40mm Cover Joint | 10 | ✓ | | | | | | | | | | | |
| 753/053 53mm End Cap | 50 Pairs | ✓ | | | | | | | | | 50 Pairs | ✓ | ✓ |
| 753/300 300mm End Cap | 10 Pairs | ✓ | 5 Pairs | ✓ | ✓ | ✓ | ✓ | ✓ | ✓ | ✓ | 10 Pairs | ✓ | ✓ |
| 652/010 Window Board Channel x 9mm For 704 and 604 Range | 20 x 5m | ✓ | | | | | | | | | | | |
| 652/115 Plasterboard Channel x 11.5mm | 20 x 5m | ✓ | | | | | | | | | | | |

* **Made To Order** Up to three week lead time. Minimum order quantity may apply.

604/Bullnosed Window x 9mm

→ 9mm bullnose windowboard
with a 36mm bullnose



604/125

Available in the following colour:



Brilliant
White
BW

Whites: Finish will vary from catalogue, please request a sample.

← White →

| Product Code | Description | Pack Qty | Brilliant White BW |
|--------------|--------------------------|----------|--------------------|
| 604/125 | 155mm x 9mm | 2 x 5m | ✓ |
| 604/175 | 205mm x 9mm | 2 x 5m | ✓ |
| 604/200 | 230mm x 9mm | 2 x 5m | ✓ |
| 604/225 | 255mm x 9mm | 2 x 5m | ✓ |
| 604/275 | 305mm x 9mm | 2 x 5m | ✓ |
| 604/405 | 470mm x 9mm (Double End) | 1 x 5m | ✓ |

604/Accessories - Bullnosed Window x 9mm



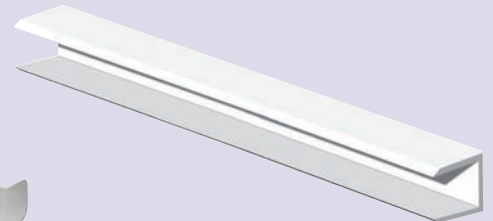
653/032



653/300



656/250



652/504

Available in the following colour:



Brilliant
White
BW

Whites: Finish will vary from catalogue, please request a sample.

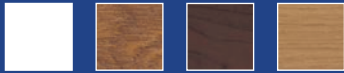
← White →

| Product Code | Description | Pack Qty | Brilliant White BW |
|--------------|----------------------------------|----------|--------------------|
| 653/032 | 32mm End Cap for 604 | 50 Pairs | ✓ |
| 653/300 | 300mm End Cap for 604 | 10 Pairs | ✓ |
| 656/250 | 250mm x 40mm Cover Joint for 604 | 10 | ✓ |
| 652/504 | Channel Windowboard x 10mm | 25 x 5m | ✓ |

Laminated Windowboards/ 22mm Bullnose



Available in the following colours:



White Sherwood Rosewood Irish Oak

W SG PG IOG

Whites: Finish will vary from catalogue, please request a sample.

| Product Code | Description | Pack Qty | White | | Woodgrains | | | Premiergrain |
|--------------|------------------------|----------|------------|----------|----------------|----------------|------------------|--------------|
| | | | White W | Pack Qty | Sherwood SG | Rosewood PG | Irish Oak IOG | |
| LWB/150 | 150mm Windowboard 5m | 1 x 5m | ✓ | | | | | |
| LWB/200 | 200mm Windowboard 5m | 1 x 5m | ✓ | 1 x 5m | ✓ | ✓ | ✓ | |
| LWB/225 | 225mm Windowboard 5m | 1 x 5m | ✓ | 1 x 5m | ✓ | ✓ | ✓ | |
| LWB/250 | 250mm Windowboard 5m | 1 x 5m | ✓ | 1 x 5m | ✓ | ✓ | ✓ | |
| LWB/300 | 300mm Windowboard 5m | 1 x 5m | ✓ | 1 x 5m | ✓ | ✓ | ✓ | |
| LWB/600/3.0 | 600mm Windowboard 3m | 1 x 3m | ✓ | 1 x 3m | ✓ | ✓ | ✓ | |
| LWB/600/4.1 | 600mm Windowboard 4.1m | 1 x 4.1m | ✓ | 1 x 4.1m | ✓ | ✓ | | |

Accessories - Laminated Windowboards

| Product Code | Description | Pack Qty | White | Woodgrains | Premiergrain |
|--------------|----------------------|----------|-------|------------|--------------|
| LWB/EC | 300mm End Cap | 50 ea | ✓ | ✓ | ✓ |
| LWB/EM | 400mm External Mitre | 50 ea | ✓ | ✓ | ✓ |
| LWB/JS | 375mm Joint Strip | 50 ea | ✓ | ✓ | ✓ |

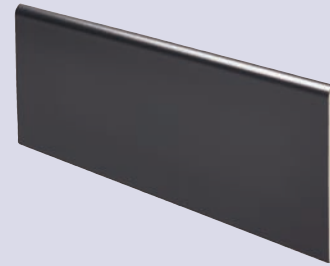
Flat Back/ Architraves x 5.5mm



712/045



712/065



712/095

Available in the following colours:



Whites: Finish will vary from catalogue, please request a sample.

| Product Code | Description | Pack Qty | ← White → Woodgrains → Premiergrain → Smoothgrain → | | | | | | | | | | | | | | |
|--------------|----------------------------|-------------------|---|----------------|------------------|----------------|----------------|-------------------|-------------------|------------------|------------------------|-------------------------------|--------------------------|-------------------|---|-------|--|
| | | | Brilliant White BW | Mahogany WG | Blackgrain BG | Sherwood SG | Rosewood PG | Whitegrain WHG | Creamgrain CRG | Irish Oak IOG | Anthracite Grey AGG | Anthracite Smooth Grey ASG | Smooth Slate Grey SSG | Agate Grey GAG | | | |
| 712/045 | 45mm x 5.5mm: Flat Back | 10 x 5m 4 x 5m | ✓ | ✓ | ✓ | ✓ | ✓ | ✓ | ✓ | ✓ | ✓ | ✓ | ✓ | ✓ | ✓ | NEW ✓ | |
| 712/065 | 65mm x 5.5mm: Flat Back | 10 x 5m 4 x 5m | ✓ | ✓ | ✓ | ✓ | ✓ | ✓ | ✓ | ✓ | ✓ | ✓ | ✓ | ✓ | ✓ | NEW ✓ | |
| 712/095 | 95mm x 5.5mm: Flat Back | 10 x 5m 4 x 5m | ✓ | ✓ | ✓ | ✓ | ✓ | ✓ | ✓ | ✓ | ✓ | ✓ | ✓ | ✓ | ✓ | NEW ✓ | |

Ridge Back/Architraves x 7mm



Available in the following colour:



Brilliant
White
BW

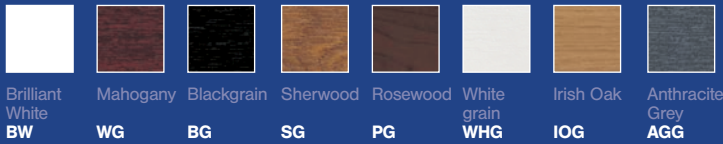
Whites: Finish will vary from catalogue, please request a sample.

| Product Code | Description | White | |
|--------------|--------------------------------------|----------|--------------------|
| | | Pack Qty | Brilliant White BW |
| 723/040 | 40mm x 7mm: Ridge Back Pencil Round | 10 x 5m | ✓ |
| 723/060 | 60mm x 7mm: Ridge Back Pencil Round | 10 x 5m | ✓ |
| 723/100 | 100mm x 7mm: Ridge Back Pencil Round | 10 x 5m | ✓ |

Ogee/Architraves x 18mm



Available in the following colours:



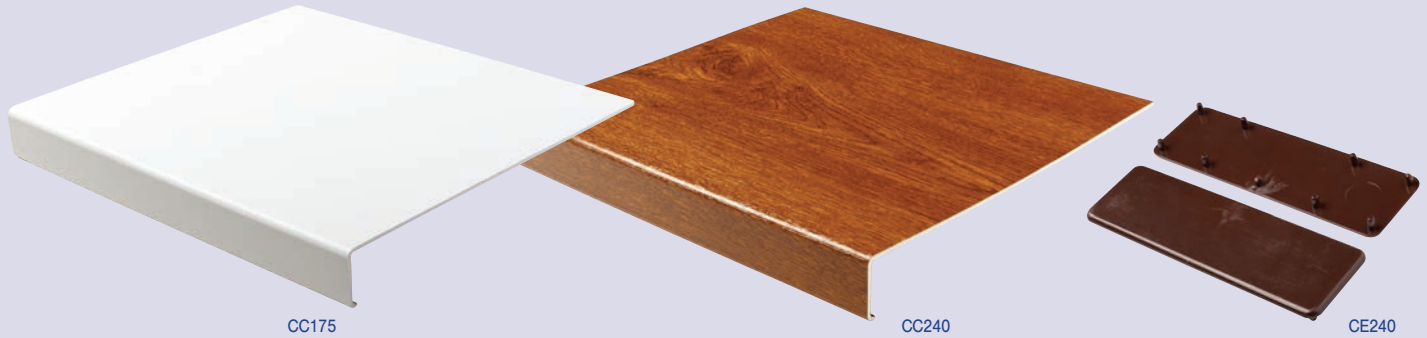
Whites: Finish will vary from catalogue, please request a sample.

| Product Code | Description | Pack Qty | White | | Woodgrains | | | | | Premiergrain | | |
|--------------|----------------------------|----------|--------------------|-------------|---------------|-------------|-------------|----------------|---------------|---------------------|---|--|
| | | | Brilliant White BW | Mahogany WG | Blackgrain BG | Sherwood SG | Rosewood PG | Whitegrain WHG | Irish Oak IOG | Anthracite Grey AGG | | |
| 733/070/5.3 | 70mm x 18mm Ogee 5.3m Long | 5 x 5.3m | ✓ | ✓* | ✓ | ✓ | ✓ | ✓ | ✓* | ✓* | ✓ | |
| 733/125 | 125mm x 18mm Ogee | 5 x 5m | ✓ | ✓ | ✓ | ✓ | ✓ | ✓ | ✓ | ✓ | ✓ | |

* Made To Order Up to three week lead time. Minimum order quantity may apply.



Cover Cills/ PVC-U Cover Cills & End Caps

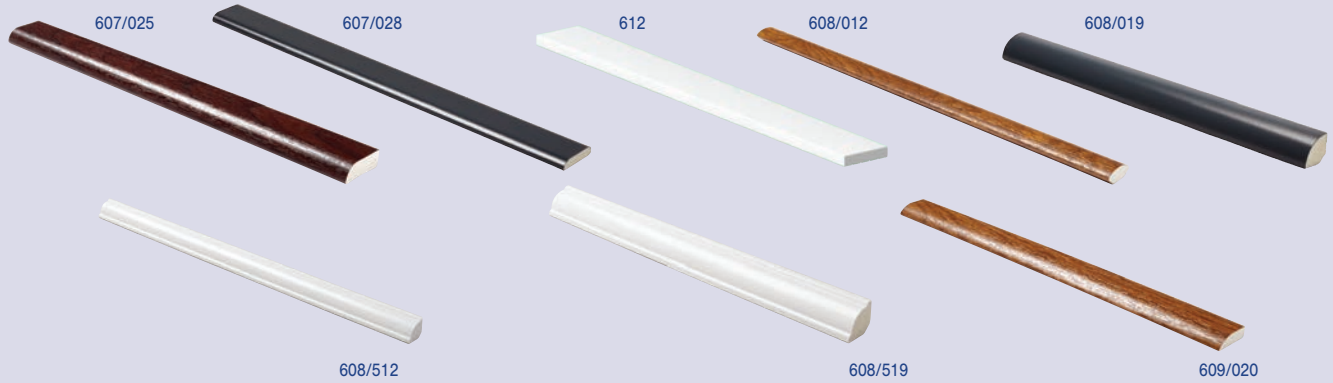


Whites: Finish will vary from catalogue, please request a sample.

| Product Code | Description | White | | Woodgrains | | | Colours | | |
|--------------|---------------------------------|----------|--------------------|------------|-------------|-------------|----------|---------|---------|
| | | Pack Qty | Brilliant White BW | Pack Qty | Mahogany WG | Sherwood SG | Pack Qty | Brown B | Tan TAN |
| CC175 | 175mm Cover Cill | 5 x 5m | ✓ | | | | | | |
| CC240 | 240mm Cover Cill | 5 x 5m | ✓ | 5 x 5m | ✓ | ✓* | | | |
| CE240 | 100mm End Cap for CC175 & CC240 | 50 Pairs | ✓ | | | | 50 Pairs | ✓ | ✓ |

* Made To Order Up to three week lead time. Minimum order quantity may apply.

Trims/Window Finishing Trims



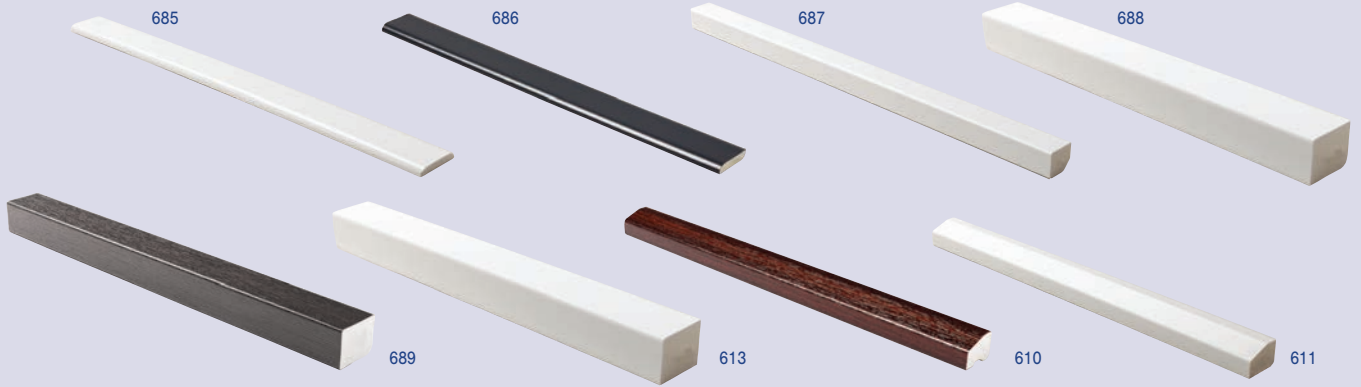
Available in the following colours:



Whites: Finish will vary from catalogue, please request a sample.

| Product Code | Description | Pack Qty | White | | Woodgrains | | | | | Premiergrain | | | | Smoothgrain | |
|--------------|--------------------------------|--------------------|--------------------|-------------|---------------|-------------|-------------|----------------|----------------|---------------|---------------------|----------------------------|-----------------------|----------------|-------|
| | | | Brilliant White BW | Mahogany WG | Blackgrain BG | Sherwood SG | Rosewood PG | Whitegrain WHG | Creamgrain CRG | Irish Oak IOG | Anthracite Grey AGG | Anthracite Smooth Grey ASG | Slate Smooth Grey SSG | Agate Grey GAG | |
| 607/025 | 25mm x 9mm Pencil Round Fillet | 25 x 5m 10 x 5m | ✓ | | | | | ✓ | | | | | | | |
| 607/028 | 28mm x 6mm D Section | 25 x 5m 10 x 5m | ✓ | ✓ | ✓ | ✓ | ✓ | ✓ | ✓ | ✓ | ✓ | ✓ | ✓ | ✓ | NEW ✓ |
| 612 | 28mm x 6mm Rectangle | 20 x 5m | ✓ | | | | | | | | | | | | |
| 608/012 | 12mm Quadrant | 25 x 5m 10 x 5m | ✓ | ✓ | ✓ | ✓ | ✓ | ✓ | ✓ | | | | | | |
| 608/019 | 18mm Quadrant | 25 x 5m 10 x 5m | ✓ | ✓ | ✓ | ✓ | ✓ | ✓ | ✓ | ✓ | ✓ | ✓ | ✓ | ✓ | NEW ✓ |
| 608/512 | 12mm Ogee Quadrant | 40 x 5m | ✓ | | | | | | | | | | | | |
| 608/519 | 18mm Ogee Quadrant | 20 x 5m | ✓ | | | | | | | | | | | | |
| 609/020 | 20mm x 6mm Edge Fillet | 25 x 5m 10 x 5m | ✓ | ✓ | ✓ | ✓ | ✓ | | | | | | | | NEW ✓ |

Trims/Window Finishing Trims



Available in the following colours:



Whites: Finish will vary from catalogue, please request a sample.

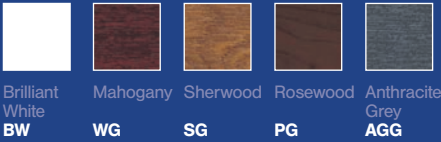
| Product Code | Description | Pack Qty | ← White → | | Woodgrains | | | | | Premiergrain | | | Smoothgrain → | | |
|--------------|-------------------------|--------------------|--------------------|-------------|---------------|-------------|-------------|----------------|----------------|---------------|---------------------|----------------------------|-----------------------|----------------|-------|
| | | | Brilliant White BW | Mahogany WG | Blackgrain BG | Sherwood SG | Rosewood PG | Whitegrain WHG | Creamgrain CRG | Irish Oak IOG | Anthracite Grey AGG | Anthracite Smooth Grey ASG | Slate Smooth Grey SSG | Agate Grey GAG | |
| 685 | 25mm x 4mm D Section | 25 x 5m 10 x 5m | ✓ | | | ✓ | ✓ | | | | | | | | |
| 686 | 28mm x 6mm Edge Fillet | 25 x 5m 10 x 5m | ✓ | ✓ | ✓ | ✓ | ✓ | ✓ | ✓ | ✓ | ✓ | ✓ | ✓ | ✓ | NEW ✓ |
| 687 | 15mm x 13mm Rectangle | 20 x 5m 5 x 5m | ✓ | ✓ | ✓ | ✓ | ✓ | | | | ✓ | | | | |
| 688 | 25mm x 30mm Rectangle | 10 x 5m | ✓ | | | | | | | | | | | | |
| 689 | 25mm x 20mm Rectangle | 10 x 5m 5 x 5m | ✓ | ✓ | ✓ | ✓ | ✓ | | | | ✓ | | | | |
| 613 | 19mm x 19mm Square Trim | 10 x 5m | ✓ | | | | | | | | | | | | |
| 610 | 20mm x 15mm Unitrim | 20 x 5m 20 x 5m | ✓ | ✓* | | ✓ | ✓ | | | | ✓ | ✓ | | | NEW ✓ |
| 611 | 20mm x 15mm Varitrim | 20 x 5m | ✓ | | | | | | | | | | | | |

* Made To Order Up to three week lead time. Minimum order quantity may apply.

Trims/Window Finishing Trims



Available in the following colours:



Whites: Finish will vary from catalogue, please request a sample.

| Product Code | Description | White | | Woodgrains | | | Premiergrain | |
|--------------|----------------------------|----------|--------------------|------------|-------------|-------------|--------------|---------------------|
| | | Pack Qty | Brilliant White BW | Pack Qty | Mahogany WG | Sherwood SG | Rosewood PG | Anthracite Grey AGG |
| CF50 | 25mm x 25mm Flexible Angle | 10 x 5m | ✓ | 10 x 5m | ✓* | ✓ | ✓ | |
| CF70 | 35mm x 35mm Flexible Angle | 20 x 5m | ✓ | | | | | |
| CF100 | 50mm x 50mm Flexible Angle | 10 x 5m | ✓ | 10 x 5m | ✓ | ✓ | ✓ | ✓* |
| CF150 | 75mm x 75mm Flexible Angle | 5 x 5m | ✓ | | | | | |
| CTC015 | Scotia Self Adhesive 13mm | 25 x 5m | ✓ | | | | | |
| CCQ012 | Quadrant Clip 22 x 16mm | 25 x 5m | ✓ | | | | | |

NB: All woodgrain flexible angles are foiled Pre-Bent

* **Made To Order** Up to three week lead time. Minimum order quantity may apply.

Angles/Rigid Angles



Available in the following colours:

Brilliant
White
BWMahogany
WGSherwood
SGRosewood
PG

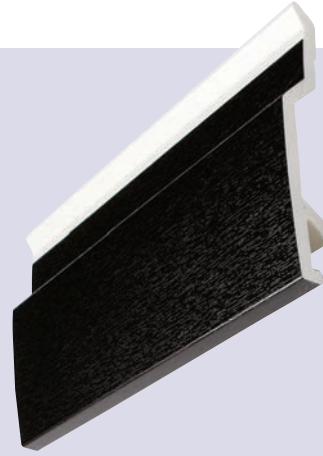
Whites: Finish will vary from catalogue, please request a sample.

| Product Code | Description | Pack Qty | White | | Woodgrains | | | |
|--------------|---------------------------------------|----------|--------------------|----------|-------------|-------------|-------------|--|
| | | | Brilliant White BW | Pack Qty | Mahogany WG | Sherwood SG | Rosewood PG | |
| CA180 | 100mm x 80mm Rigid Angle | 5 x 5m | ✓ | 5 x 5m | ✓ | ✓ | ✓ | |
| KB1023 | 100mm (2mm) x 100mm (3mm) Rigid Angle | 5 x 6m | ✓ | | | | | |
| KB2525 | 25mm x 25mm (2mm) Rigid Angle | 10 x 6m | ✓ | | | | | |
| KB423 | 40mm (2mm) x 30mm (3mm) Rigid Angle | 10 x 6m | ✓ | | | | | |
| KB523 | 50mm (2mm) x 40mm (3mm) Rigid Angle | 10 x 6m | ✓ | | | | | |
| KB623 | 60mm (2mm) x 40mm (3mm) Rigid Angle | 10 x 6m | ✓ | | | | | |
| KA2525 | 25mm x 25mm x 1.3mm Rigid Angle | 10 x 5m | ✓ | | | | | |
| KA3232 | 32mm x 32mm x 1.3mm Rigid Angle | 10 x 5m | ✓ | | | | | |
| KA4040 | 40mm x 40mm x 1.3mm Rigid Angle | 10 x 5m | ✓ | | | | | |
| KA5050 | 50mm x 50mm x 1.3mm Rigid Angle | 10 x 5m | ✓ | | | | | |

Cladding/ 670 and 671 Series

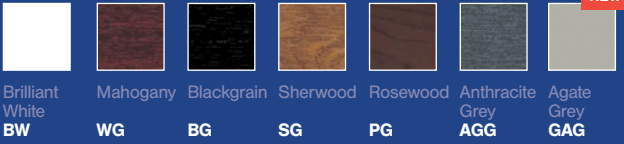


670/150



671/100

Available in the following colours:

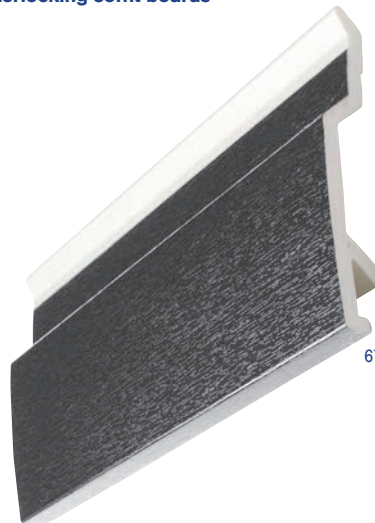


Whites: Finish will vary from catalogue, please request a sample.

| Product Code | Description | White | | Woodgrains | | | | | Premiergrain | |
|--------------|--------------------------------|----------|--------------------|------------|-------------|---------------|-------------|-------------|---------------------|----------------|
| | | Pack Qty | Brilliant White BW | Pack Qty | Mahogany WG | Blackgrain BG | Sherwood SG | Rosewood PG | Anthracite Grey AGG | Agate Grey GAG |
| 670/150 | 150mm Shiplap Cladding | 5 x 5m | ✓ | 5 x 5m | ✓ | ✓ | ✓ | ✓ | ✓ | ✓ |
| 670/150/6.0 | 150mm Shiplap Cladding 6 metre | 5 x 6m | ✓ | | | | | | | |
| 671/100 | 100mm Open V Joint Cladding | 5 x 5m | ✓ | 5 x 5m | ✓ | ✓ | ✓ | ✓ | ✓ | ✓ |

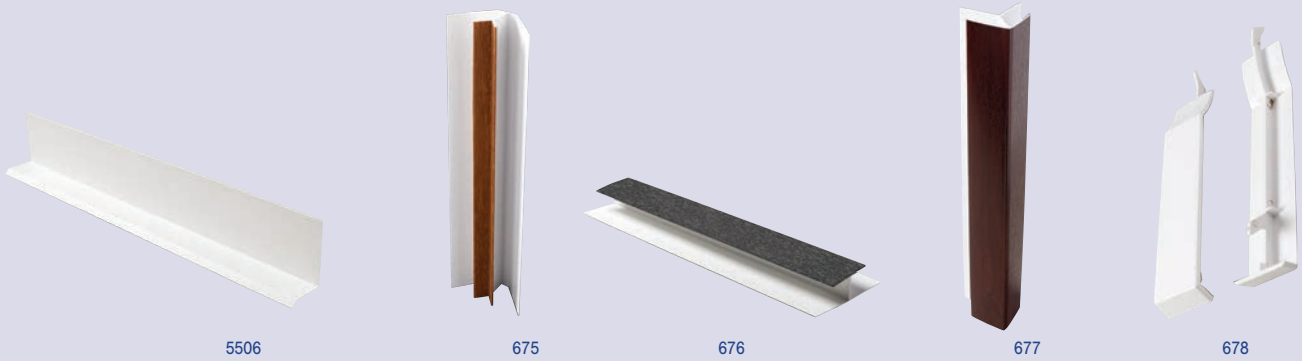
* **Made To Order** Up to three week lead time. Minimum order quantity may apply.

Please note that 670 and 671 ranges can be used as interlocking soffit boards



671/100/AGG

Cladding/ Accessories - 670 and 671 Range



Available in the following colours:



Whites: Finish will vary from catalogue, please request a sample.

| Product Code | Description | Pack Qty | White | | Woodgrains | | | | | Premiergrain | |
|--------------|---------------------------|----------|--------------------|----------|-------------|---------------|-------------|-------------|---------------------|----------------|--------|
| | | | Brilliant White BW | Pack Qty | Mahogany WG | Blackgrain BG | Sherwood SG | Rosewood PG | Anthracite Grey AGG | Agate Grey GAG | |
| 5506 | Drip Trim | 10 x 5m | ✓ | | | | | | | | |
| 675 | Internal Corner Trim | 5 x 5m | ✓ | 2 x 5m | ✓* | ✓* | ✓* | ✓* | | | |
| 676 | Cover Joint Trim | 5 x 5m | ✓ | 2 x 5m | ✓ | ✓ | ✓ | ✓ | ✓* | | NEW ✓* |
| 677 | External Corner Trim | 5 x 5m | ✓ | 2 x 5m | ✓ | ✓ | ✓ | ✓ | | | NEW ✓* |
| 678 | 150mm Shiplap Cover Joint | 50 ea | ✓ | | | | | | | | |

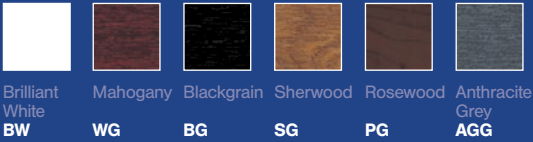
* Made To Order Up to three week lead time. Minimum order quantity may apply.

Please note that 670 and 671 ranges can be used as interlocking soffit boards

Cladding/Accessories - 670 and 671 Range



Available in the following colours:



Whites: Finish will vary from catalogue, please request a sample.

| Product Code | Description | White | | Woodgrains | | | | | Premiergrain | Colours | |
|--------------|--------------------------------|----------|---------------------------|------------|--------------------|----------------------|--------------------|--------------------|----------------------------|----------|----------------|
| | | Pack Qty | Brilliant White BW | Pack Qty | Mahogany WG | Blackgrain BG | Sherwood SG | Rosewood PG | Anthracite Grey AGG | Pack Qty | Brown B |
| 679 | 100mm Open V Cover Joint | 50 ea | ✓ | | | | | | | | |
| 680 | Two Part Corner Trim | 5 x 5m | ✓ | 2 x 5m | ✓ | ✓ | ✓ | ✓ | ✓ | | |
| 681 | Two Part Universal Trim | 5 x 5m | ✓ | 2 x 5m | ✓ | ✓ | ✓ | ✓ | ✓ | | |
| 682 | Universal Channel | 10 x 5m | ✓ | 2 x 5m | ✓ | ✓ | ✓ | ✓ | ✓ | | |
| 683 | Starter trim with Batten Cover | 5 x 5m | ✓ | | | | | | | 5 x 5m | ✓ |

Please note that 670 and 671 ranges can be used as interlocking soffit boards

Kavex Range/Textured Cladding



DCE/150



DCE/300

Available in the following colours:



| | | | | |
|----------|-------------|-------------|-------------|-------------|
| White | Sand | Cream | Light Grey | Light Blue |
| W | 1015 | 9001 | 7035 | X002 |

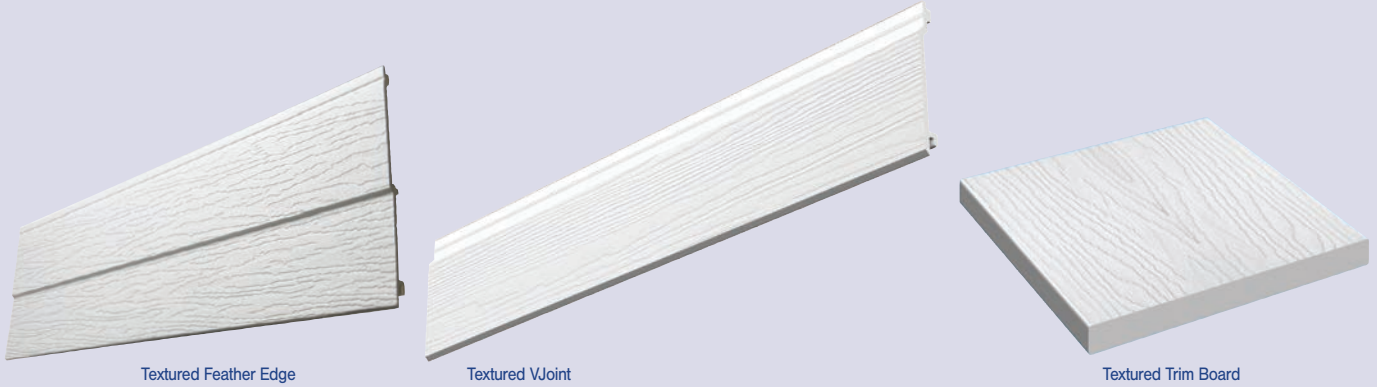
Whites: Finish will vary from catalogue, please request a sample.

| Product Code | Description | Pack Qty | Available in following colours | | | | |
|----------------|--|----------|--------------------------------|---------------------|----------------------|---------------------------|---------------------------|
| | | | White W | Sand 1015 | Cream 9001 | Light Grey 7035 | Light Blue X002 |
| DCE/150 | 150mm Textured Shiplap Cladding | 5 x 5m | ✓* | ✓* | ✓* | | |
| DCE/300 | 300mm Double Textured Shiplap Cladding | 4 x 5m | ✓ | ✓ | ✓ | ✓ | ✓ |

* **Made To Order** Up to three week lead time. Minimum order quantity may apply.



Kavex Range/Textured Cladding



Available in the following colours:



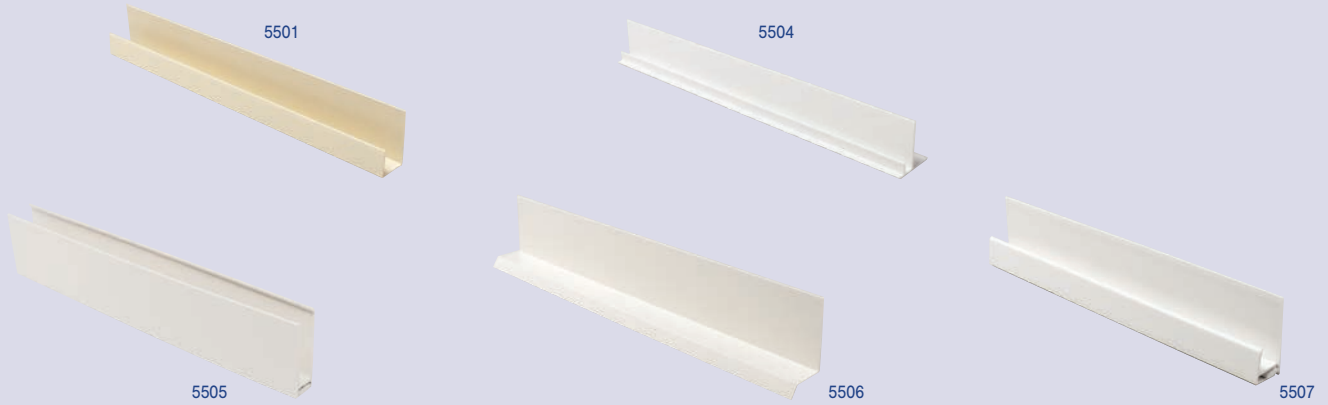
Whites: Finish will vary from catalogue, please request a sample.

| Product Code | Description | Pack Qty | Available in following colours | | | | |
|--------------------|---|----------|--------------------------------|---------------------|----------------------|---------------------------|---------------------------|
| | | | White W | Sand 1015 | Cream 9001 | Light Grey 7035 | Light Blue X002 |
| DFE/270 | 270mm Double Textured Feather Edge Cladding | 4 x 5m | ✓* | ✓* | ✓* | ✓* | ✓* |
| SVE/150 | 150mm Textured V Joint Cladding | 5 x 5m | ✓* | ✓* | ✓* | ✓* | ✓* |
| TEXTRIM/100 | 100mm x 9mm Textured Trim | 5 x 5m | ✓* | | | | |

* **Made To Order** Up to three week lead time. Minimum order quantity may apply.



Kavex Range/ Accessories - Textured Cladding



Available in the following colours:



White Sand Cream Light Grey Light Blue
W **1015** **9001** **7035** **X002**

Whites: Finish will vary from catalogue, please request a sample.

| Product Code | Description | Pack Qty | Available in following colours | | | | |
|--------------|---|----------|--------------------------------|---------------------|----------------------|---------------------------|---------------------------|
| | | | White W | Sand 1015 | Cream 9001 | Light Grey 7035 | Light Blue X002 |
| 5501 | Universal Channel for Kavex Cladding | 10 x 5m | ✓ | ✓ | ✓ | ✓ | ✓ |
| 5504 | Starter Trim with Batten Cover for Kavex Cladding | 10 x 5m | ✓ | ✓ | | | ✓ |
| 5505 | 2 Part Top Edge Trim for Kavex Cladding | 5 x 5m | ✓ | ✓ | ✓ | ✓ | ✓ |
| 5506 | Drip Trim | 10 x 5m | ✓ | ✓ | ✓ | | |
| 5507 | 2 Part Universal Trim for Kavex Cladding | 5 x 5m | ✓ | | | | |

Kavex Range/Accessories - Textured Cladding



Available in the following colours:



White

Sand

Cream

Light Grey

Light Blue

W**1015****9001****7035****X002**

Whites: Finish will vary from catalogue, please request a sample.

Available in following colours

| Product Code | Description | Pack Qty | White | Sand | Cream | Light Grey | Light Blue |
|-----------------|--|----------|----------|-------------|-------------|-------------|-------------|
| | | | W | 1015 | 9001 | 7035 | X002 |
| 5513 | 2 Part Int/Ext Corner Trim (50mm) for Kavex Cladding | 5 x 5m | ✓ | ✓ | ✓ | ✓ | ✓ |
| 5509 | 2 Part Centre Joint Trim for Kavex Cladding | 5 x 5m | ✓ | ✓ | ✓ | ✓ | ✓ |
| 5510 | Wall Starter Trim for Kavex Cladding | 10 x 5m | ✓ | ✓ | ✓ | ✓ | ✓ |
| 5512 | 150mm plain Shiplap Cover Joint for Kavex Cladding | 20 | ✓ | ✓ | ✓ | | |
| 5516 | Universal Trim With Edge Cover for Kavex Cladding | 5 x 5m | ✓ | | | | |
| DCE/JNT2 | 300mm Textured Cover Joint for DCE/300 | 10 | ✓ | ✓ | ✓ | ✓ | ✓ |
| DFE/JNT2 | 270mm Textured Cover Joint for DFE/270 | 10 | ✓ | ✓ | ✓ | ✓ | ✓ |

Fixings/Nails and Pins



SS40N

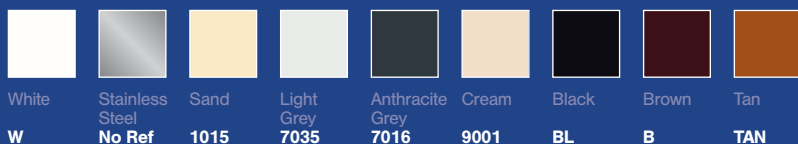


SS40P



SS30CP

Available in the following colours:



White Stainless Steel Sand Light Grey Anthracite Grey Cream Black Brown Tan
W **No Ref** **1015** **7035** **7016** **9001** **BL** **B** **TAN**

Whites: Finish will vary from catalogue, please request a sample.

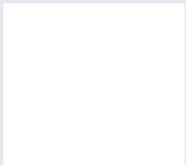
| Product Code /Description | White | | | Colours | | | | | | | |
|---|----------|---------|------------------------|----------|-----------|-----------------|-----------------------|------------|----------|---------|---------|
| | Pack Qty | White W | Stainless Steel No Ref | Pack Qty | Sand 1015 | Light Grey 7035 | Anthracite Grey 7016* | Cream 9001 | Black BL | Brown B | Tan TAN |
| SS-65N 65mm Plastic Headed Nail 10G | 100pb | ✓ | | 100pb | ✓ | ✓ | ✓ | ✓ | ✓ | ✓ | ✓ |
| SS-50N 50mm Plastic Headed Nail 10G | 100pb | ✓ | | 100pb | ✓ | ✓ | ✓ | | ✓ | ✓ | ✓ |
| SS-40N 40mm Plastic Headed Nail 10G | 100pb | ✓ | | | | | | | | | |
| SS-40P 40mm Plastic Headed Pin 14G | 250pb | ✓ | | 250pb | ✓ | ✓ | ✓ | ✓ | ✓ | ✓ | ✓ |
| SS-30P 30mm Plastic Headed Pin 14G | 250pb | ✓ | | | | | | | | | |
| SS-30-CP 30mm Cladding Pin 14G | 250pb | | ✓ | | | | | | | | |

* RAL 7016 nails to be used with Anthracite Grey (AGG) foils

Colour Swatch



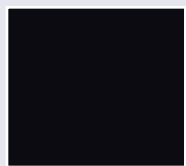
Whites



Brilliant White - BW

Whites: Finish will vary from catalogue, please request sample

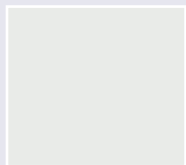
Solid Colours



Black - BL



Sand - 1015

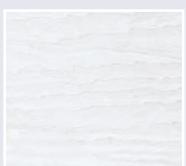


Light Grey - 7035



Cream - 9001

Kavex Range



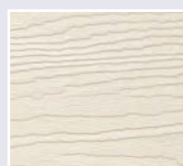
White - W



Light Grey - 7035



Sand - 1015

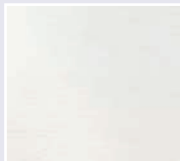


Cream - 9001



Light Blue - X002

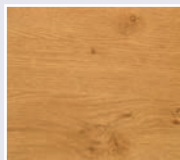
Premiergrains*



Whitegrain - WHG



Creamgrain - CRG



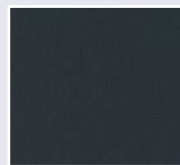
Irish Oak - IOG



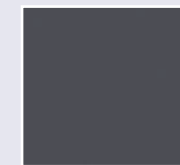
Anthracite Grey - AGG

*Up to three week lead time

Smoothgrain

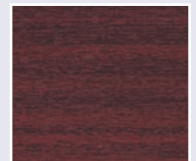


Anthracite Smooth Grey - ASG

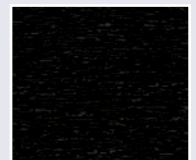


Slate Smooth Grey - SSG

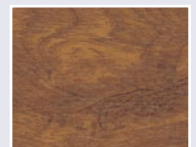
Woodgrains



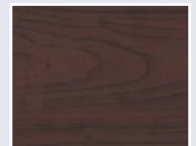
Mahogany - WG



Blackgrain - BG



Sherwood - SG



Rosewood - PG

Please call customer services on 08702 406107 for a colour swatch.

Decking and balustrade system



NEW



DEKBOARD[®]

The Range Guide

Extend your outdoor living space with our stylish, practical PVC decking & balustrade system

dekboard.co.uk

Decking

DEKBOARD

With DekBoard, you can create a clean, safe and secure outdoor living area for rest, play and getting together.

The DekBoard system is made from fully recyclable PVC, manufactured in the UK and allows you to extend your home seamlessly into a beautiful outdoor living space.

Ideal for garden and patio areas, DekBoard is made to look and feel like high-quality timber, without the need for the time consuming and costly maintenance that timber always needs.

Our stylish decking system will increase the usable area in and around your home, allowing you to enjoy the outdoors. and still feel safe, clean and in control of your own space.

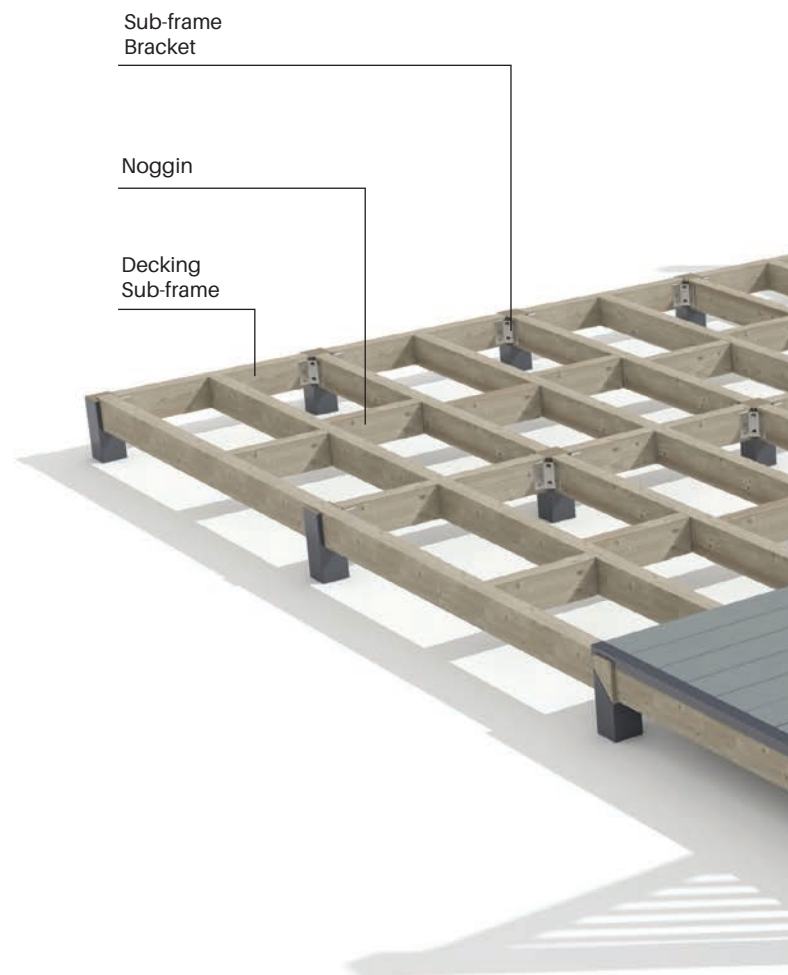
DEKBOARD CONTENTS

| | |
|------------------------------|-------|
| Decking | 56-57 |
| Balustrade | 58-64 |
| Post | 58-59 |
| Handrails | 60-61 |
| Pickets | 62 |
| Brackets | 63 |
| Gates | 64 |
| Maintenance and Aftercare | 65 |
| Project Planner | 66-67 |
| Reversible Composite Decking | 69-70 |
| Fiberon Sanctuary | 71-72 |
| Fiberon Good Life | 73-74 |

All instructions and suggestions in this document are given for guidance only and the installer should satisfy themselves that their planned deck will be safe given their individual circumstances and requirements.

Warranty available upon request. Please contact us for more details.

The DekBoard System





Transform your home's outdoor living space with a bespoke design to meet your needs



Post Cap
Brackets

Top Rail
Post

Picket
Gate

Bottom rail

150mm x 25mm Picket for Fascia

Installation

Care should be taken when working in extreme windy and wet conditions. All Installations should take place at ambient temperatures between 5° C and 25° C.

Solvent adhesive or Superglues must never come into contact / used with foil surfaces. All products must be stored out of direct sunlight.

Note: Glass screens are known to intensify the effects of sunlight on plastic packaged items.



Robust



Slip Resistant



Low Maintenance



100% Recyclable



Long Life



Product Testing

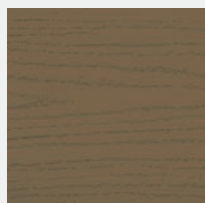
DEKBOARD

A great range of practical PVC decking boards with a stylish, traditional woodgrain effect pattern.

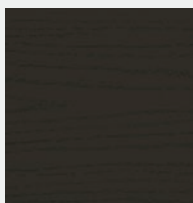
Our boards are designed to be tough and durable, allowing you to enjoy your garden with confidence.

The board's satin finish is embossed for good slip resistance and the surface is easy to clean, giving you a stress free, low maintenance outdoor area to enjoy.

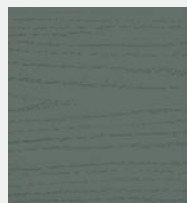
DekBoard has a great range of contemporary and neutral colours that go well with any settings and truly complement our balustrade range.



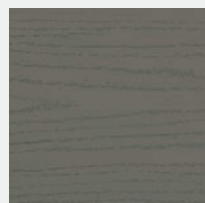
Light Oak



Dark Oak



Moss grey



Driftwood

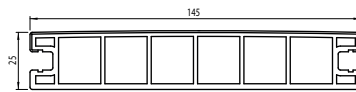


Luna grey



Anthracite Grey

Decking



| Code | Colour | Length (m) |
|------------|-----------------|------------|
| DDBP4902LO | Light Oak | 4.902 |
| DDBP4902DO | Dark Oak | 4.902 |
| DDBP4902MG | Moss Grey | 4.902 |
| DDBP4902DW | Driftwood | 4.902 |
| DDBP4902LN | Luna Grey | 4.902 |
| DDBP4902AG | Anthracite Grey | 4.902 |

Deck Clip



Use Wood Screw Countersunk (DWSCREW30) P9

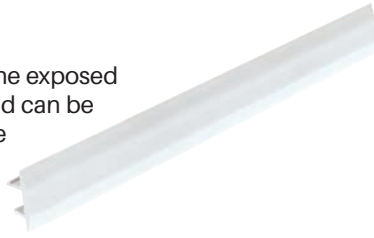
The deck must be supported by bearers and a deck clip used on each bearer at maximum centres of 450mm. Deck clips should be secured using 4.5mm x 30mm Stainless Steel counter sunk screws (Code - DWSCREW30). Where decking boards are not set at 90deg to the bearers the fixing centres of the decking board will naturally increase. This should be accounted for in bearer spacing in that area.

| Code | Size | Pack |
|--------|-------------|---------|
| DTCLIP | 40mm x 33mm | Bag 250 |

Accessories

Infill Trim

This trim clips neatly into the exposed edge of the outer board and can be used along the appropriate edge of the deck or along the front edge of a step.



| Code | Colour | Length (m) |
|---------------|-----------------|------------|
| DINFILL3000LO | Light Oak | 3.0 |
| DINFILL3000DO | Dark Oak | 3.0 |
| DINFILL3000MG | Moss Grey | 3.0 |
| DINFILL3000DW | Driftwood | 3.0 |
| DINFILL3000LN | Luna Grey | 3.0 |
| DINFILL3000AG | Anthracite Grey | 3.0 |

D Trim

A great looking, heavy duty profile that is used to cover exposed ends of the board around the edge of the deck. This will provide an all-round neater finish for DIYers.



| Code | Colour | Length (m) |
|--------------|-----------------|------------|
| DDTRIM4902LO | Light Oak | 4.902 |
| DDTRIM4902DO | Dark Oak | 4.902 |
| DDTRIM4902MG | Moss Grey | 4.902 |
| DDTRIM4902DW | Driftwood | 4.902 |
| DDTRIM4902LN | Luna Grey | 4.902 |
| DDTRIM4902AG | Anthracite Grey | 4.902 |

General Accessories

U-Channel (29mm x 29mm x 29mm)



| Code | Colour | Length (m) |
|---------------|--------|------------|
| DCHAN4876W | White | 4.876 |
| DCHAN4876_ _* | Foil | 4.876 |

*add colour code from swatches below

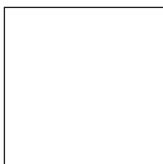
Fixed Angle (40mm x 40mm)



| Code | Colour | Length (m) |
|--------------|--------|------------|
| DFANG6000W | White | 6.0 |
| DFANG6000_ _ | Foil | 6.0 |

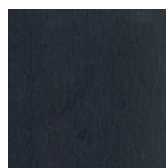
*add colour code from swatches below

Standard



White (W)

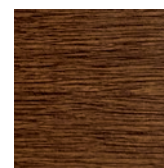
Foiled



Anthracite Grey (AG)



Golden Oak (GO)



Rustic Oak (RO)*



Natural Oak (NO)*

* Made to Order with Minimum Order Quantities

BALUSTRADE

A traditional balustrade system that will complement our decking boards.

DekBoard balustrades can be made up in a number of ways, depending on your needs and deck style. You can choose traditional top and bottom rails with pickets in square/diamond format. Our balustrade system is compatible with glass but this is not supplied by DekBoard.

The hand rail and bottom rails should be reinforced with a metal insert that makes them very rigid and therefore able to take a lot of pressure from the side or above.

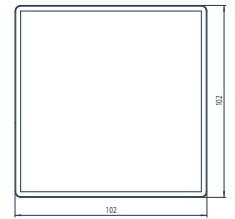
Our balustrade systems keep your family and friends safe around your garden decking.

Please consult the section on balustrade height to determine the right height for your installation.

POSTS

- Always use a timber infill for posts of at least 95 x 95mm. Post infills may also be made up of 2 x 45mm x 95mm sections screwed together.
- Where the post is to be secured into a concrete or substantial timber base a post insert (DPOSTM) may be used (p7)
- Timber post infills should be set into concrete or mounted on to well set and well drained concrete or stone pads.
- Always treat the exposed end grain of such posts for long term protection.
- Slide the post cover over the timber post infills prior to fixing the deck subframe to the posts.
- Bearers may be screwed directly to posts or affixed using a recommended Sub-Frame Bracket (p7).

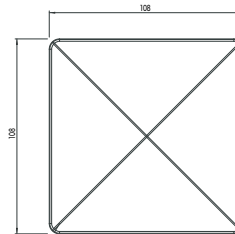
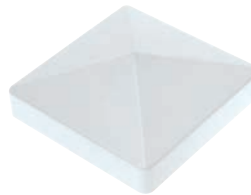
102mm x 102mm Post Sleeve



| Code | Length (m) |
|---------------|------------|
| DPOST1828W | 1.828 |
| DPOST4876W | 4.876 |
| DPOST4876_ _* | 4.876 |

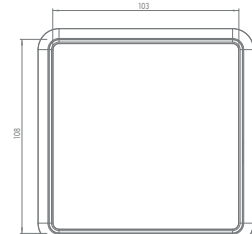
*add colour code from swatches below

Post Cap



| Code |
|-----------|
| DPOSTCW |
| DPOSTC_ _ |

Post Skirt



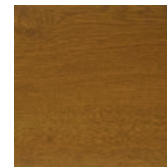
| Code |
|-----------|
| DPOSTSW |
| DPOSTS_ _ |

Standard

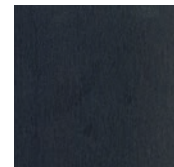


White (W)

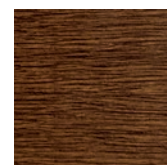
Foiled



Golden Oak (GO)



Anthracite Grey (AG)



Rustic Oak (RO)*



Natural Oak (NO)*

* Made to Order with Minimum Order Quantities

Post Mount

Mark the location of the corner holes on the lower mounting plate and drill a 10mm hole into the substrate for each of the 4 corners in order to accept a suitable M8 Fixing Anchor or appropriate concrete screws.

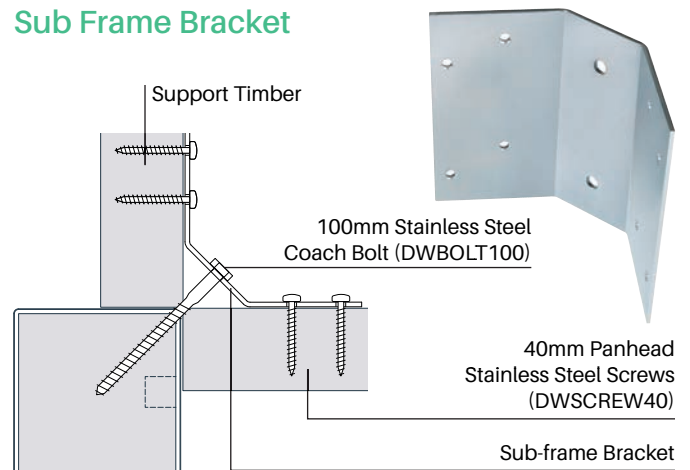
Set up the correct angle for the Post Insert by adjusting the 4 bolts threaded through the upper mounting bracket. Insert the anchors through the corner holes of both plates on the Post mount as shown and press them into the substrate.

Once the final adjustment of the post position has been achieved ensure the anchors are bolted down and the lock nuts on the adjusting bolts are tightened up against the underside of the upper mounting plate.

| Code | Length (m) |
|--------|------------|
| DPOSTM | 0.76 |

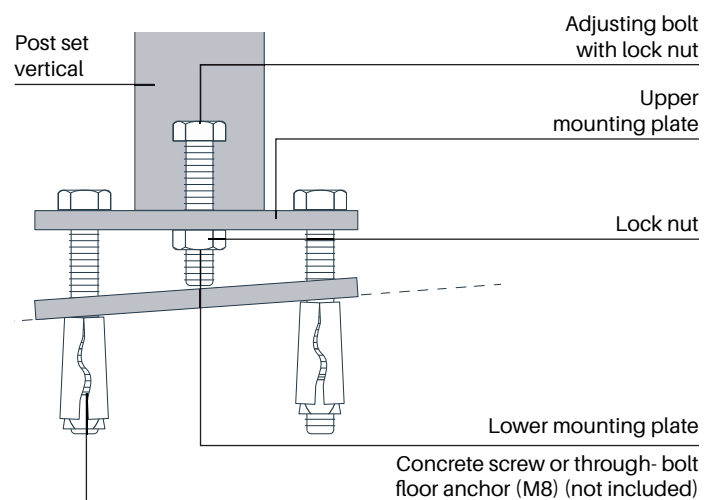


Sub Frame Bracket



This bracket is used to secure the open corners of a sub-frame to a corner post.

| Code | Length (m) |
|--------|---------------|
| DSUBBK | 100mm x 300mm |



| | Code | Units | Application | Notes |
|---------------------------------|----------------|---------|---|--|
| Coach Bolt (100mm) | DCBOLT | Box 50 | Sub Frame Bracket to Post | 13mm head Stainless Steel |
| Wood Screw Countersunk (90mm) | DWSCREW90 | Box 100 | General subframe assembly | Yellow plated- no pilot hole required (60mm of thread) |
| Wood Screw Countersunk (60mm) | DWSCREW60 | Box 200 | Fascia board to subframe Fix deck from below | Yellow plated- no pilot hole required |
| T Star Washer Head Screw (60mm) | Non stock item | | Step Tread | Stainless steel |
| Wood Screw Countersunk (50mm) | DWSCREW50 | Box 200 | Fascia board with lath | Stainless steel |
| Wood Screw Pan Head (40mm) | DWSCREW40 | Box 100 | Sub-frame bracket to frame | Stainless steel |
| Wood Screw Countersunk (30mm) | DWSCREW30 | Box 500 | Deck Clips Fixed Position Rail Brackets | Stainless steel |
| L Clip | Non stock item | | L Clip | 19 x 19mm Steel Angle Brace |

BALUSTRADE SYSTEM

Routing - Top and bottom rails can be supplied in plain or routed format ready to accept the 32mm x 32mm picket.

The holes are routed square with the rail.

Square - RS

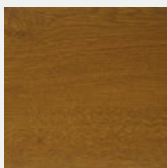


Standard

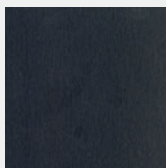


White (W)

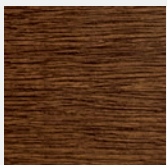
Foiled



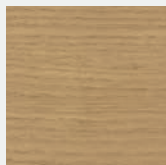
Golden Oak (GO)



Anthracite Grey (AG)



Rustic Oak (RO)*

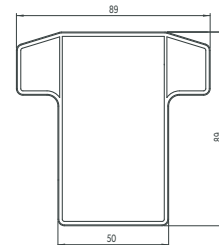


Natural Oak (NO)*

* Made to Order with Minimum Order Quantities

Top Rail Plain and Routed

It is recommended that rail reinforcement is used on all top and bottom rails



Bottom Rail Plain and Routed

It is recommended that rail reinforcement is used on all top and bottom rails



Please note: Top and bottom rails are ordered in pairs therefore identified as a single item

| Code Square Rout | Code Plain - No rout | Length (m) |
|---------------------|-------------------------|------------|
| DTBRLRS1828W | DTRAIL1828W | 1.828m |
| DTBRLRS1828_* | DTRAIL1828_* | 1.828m |
| DTBRLRS2438W | DTRAIL2438W | 2.438m |
| DTBRLRS2438_* | DTRAIL2438_* | 2.438m |

*add colour code from swatches on right

Height of balustrades

Balustrades on decking provide a decorative means of preventing falls.

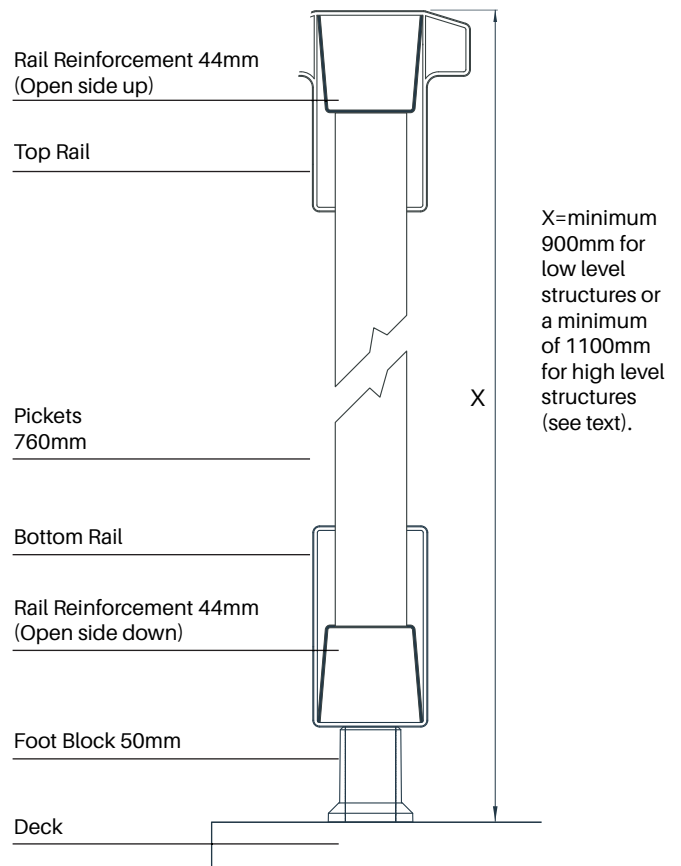
Even a small change of level can be a hazard. Unless the deck surface is flush with the surrounding ground, a balustrade should be incorporated.

The height of the balustrade depends on how far the deck surface is off the ground:

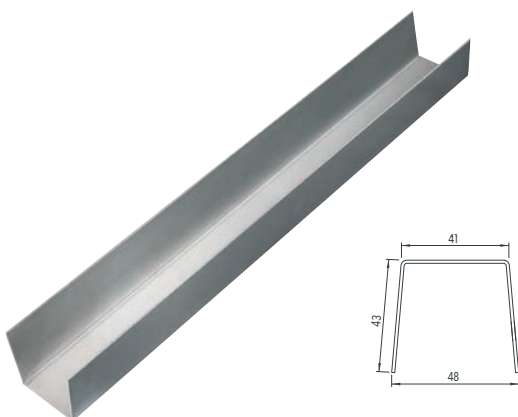
For 'low-level' structures where the deck surface is up to 600mm from ground level, the hand rail height should be a minimum of 900mm above the deck surface.

For 'high-level' decks over 600mm high the balustrade height should be a minimum of 1100mm above the deck surface.

DekBoard standard balustrade components have been designed to meet the requirements for permitted developments with a deck height of up to 300mm.

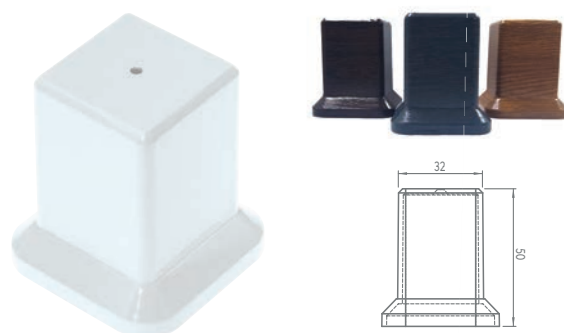


Rail Reinforcement



| Code | Length (m) |
|-----------|------------|
| DRBAR1828 | 1.828 |
| DRBAR2438 | 2.438 |

Foot Block

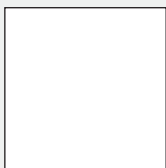


| Code | Colour | Size |
|------------|--------|-------------|
| DFTBLKW | White | 32mm x 50mm |
| DFTBLK_ _* | Foiled | 32mm x 50mm |

*add colour code from swatches left
Foiled Footblocks are * Made to Order with Minimum Order Quantities

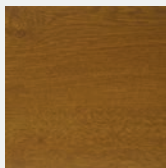
BALUSTRADE SYSTEM

Standard

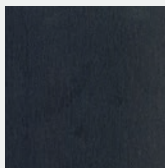


White (W)

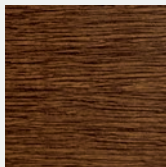
Foiled



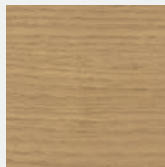
Golden Oak (GO)



Anthracite Grey (AG)



Rustic Oak (RO)*



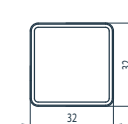
Natural Oak (NO)*

* Made to Order with Minimum Order Quantities

Note -

- Fix the lower section of each bottom bracket in position first, ensuring that they are level. Pre-assemble the rails, reinforcing bar, and pickets (see p 9), set them into the bottom rail brackets and mark the position for the top rail brackets. Remove the rail assembly, fix the top rail brackets in place and reinstall the rail assembly. The top sections of each bracket simply clip into place. A screw must be fixed into the hole in the bottom of the bracket.
- Always check that the top brackets are fixed at the required balustrade height

32mm x 32mm Picket

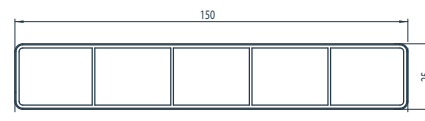


| Code | Length (m) |
|----------------|------------|
| DPICK10760W | 0.760m |
| DPICK10760_ _* | 0.760m |
| DPICK10834W | 0.834m |
| DPICK10834_ _* | 0.834m |

*add colour code from swatches

150mm x 25mm Fascia

The Fascia Board is used for facing off the edge of the deck in order to hide the timber bearers. The boards can be secretly fixed from behind using 60mm woodscrew DWSCREW60 (p9) assuming that the timber substructure is at least 40mm deep. Always leave gaps between boards for ventilation.



| Code | Length (m) |
|------------------|------------|
| DPICK64876W | 4.876m |
| DPICK6PF4876_ _* | 4.876m |

*add colour code from swatches on Pg9

DEKBOARD Brackets

Top rail and bottom rail brackets are needed to fix the rails to the posts. Brackets are available as fixed position units in straight format, in 30deg (up or down) format or in multi angle (horizontal or vertical) format.

Top Rail Bracket Straight



| Code | Colour |
|---------------|--------|
| DTOPRBKTW | White |
| DTOPRBKT_ _ * | Foiled |

*add colour code from swatches

Bottom Rail Bracket Straight



| Code | Colour |
|---------------|--------|
| DBOTMBKTW | White |
| DBOTMBKT_ _ * | Foiled |

Top Rail Stair Bracket Kit 30° 1 x up 1 x down



| Code | Colour |
|--------------|--------|
| DTSTAIRW | White |
| DTSTAIR_ _ * | Foiled |

*add colour code from swatches

Bottom Rail Stair Bracket Kit 30° 1 x up 1 x down

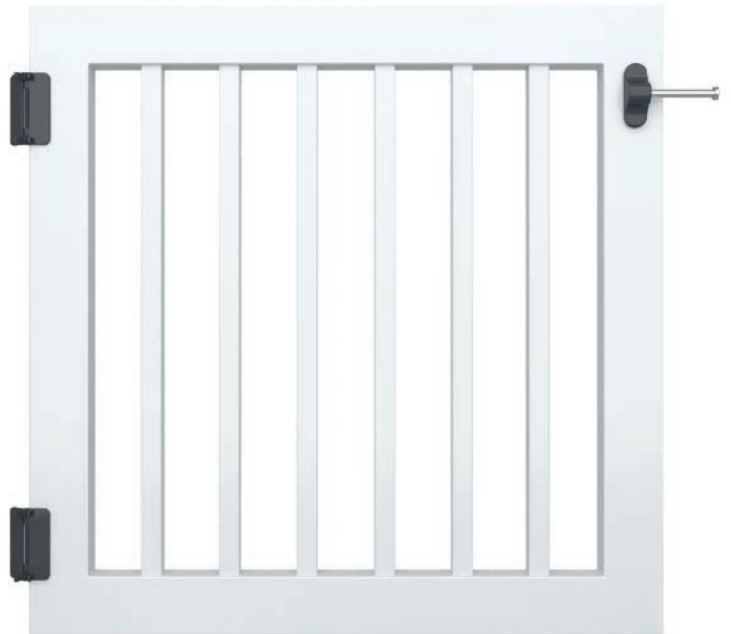


| Code | Colour |
|--------------|--------|
| DBSTAIRW | White |
| DBSTAIR_ _ * | Foiled |

Gates

We recommend that a gate is fitted to all raised deck platforms. With self-closing hinges and lockable latches these gates provide a safe enclosure for children and a deterrent to others.

The holes are routed square with the rail.



(Fittings not included)

Our standard gate size is 960mm (w) x 950mm (h) for domestic use.

Please contact us to enquire about alternative sizes.

| Code | Colour | Pack Qty |
|----------|---------|----------|
| DGATEW | White | 1 |
| DGATE_ _ | Foiled* | 1 |

Hinges

Pair of self-closing hinges to ensure that the gate always returns to a closed position. Super strong engineering polymer and stainless steel construction.



| Code | Colour | Pack Qty |
|--------|--------|----------|
| DHINGE | Black | 1 pair |

Latch

Single side secure, key-lockable latch. Adjusts horizontally and vertically to account for any gate movement.



| Code | Colour | Pack Qty |
|--------|--------|----------|
| DLATCH | Black | 1 pair |

Maintenance and Aftercare

It is vital that all decks are maintained correctly to ensure that they stay in optimum condition. We recommend the following things:

- Regularly wash all balustrade, hand rails and posts using warm water and mild detergent **ONLY**
- Use a stiff bristled brush to clean the deck boards, again using warm water and mild detergent **ONLY**
- You may also use a domestic jet wash to clean the deck boards **ONLY**

We recommend that you **DO NOT** do the following things:

- Scrub any of our products with abrasive papers, such as sandpaper etc
- Clean the deck boards or balustrades with any type of bleach or solvent
- Use of glass cleaner on any PVC-u components

Additional Tips:

- Any hot surface such as barbeques or similar should not be on or close to PVC-u decking construction.
- Please be aware that some rubber - backed mats can cause discolouration of deck boards over time
- Some brands of sun cream can permanently stain foiled balustrade finishes

All installations should be inline with our Trade Installation Guide recommendations



DEKBOARD

Plan your deck

Use this handy space to plan a deck that suits your garden area.

Start by drawing the area you'd like to deck out and then work out the number of boards required.

Our board length is 4902mm and the width is 145mm. Each board has a 5mm gap between it and the next board (this gap is created by the decking clips), so the cover width is 150mm. Therefore, each board covers 0.735 of a square metre (ie approximately 3/4 sqm).

To work out the number of boards that are required, just calculate the number of square metres your deck will cover, then divide that number by 0.735

Example:

A deck of 5m x 4m has an area of 20sqm.

The number of boards needed is $20 \div 0.735 = 27.2$ boards. You should also allow 12 to 14 decking clips per decking board.

Important - This calculation is an approximate guide. Very few decks are nicely rectangular and so you'll have to allow for odd areas that may require you to cut the boards in ways that create more wastage than this simple calculation allows for. Therefore you should allow for at least

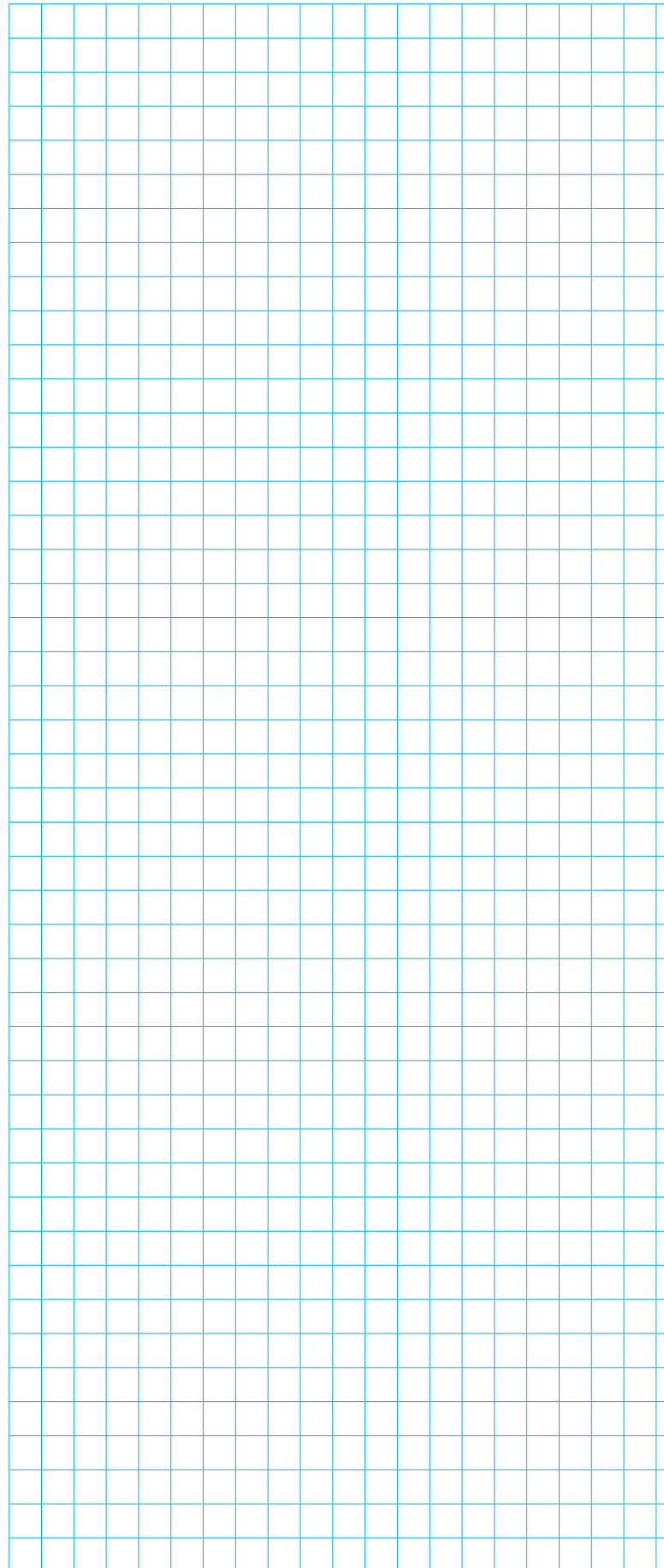
10% wastage. In some circumstances it may be helpful to tailor the size of your deck to make the most of each board length.

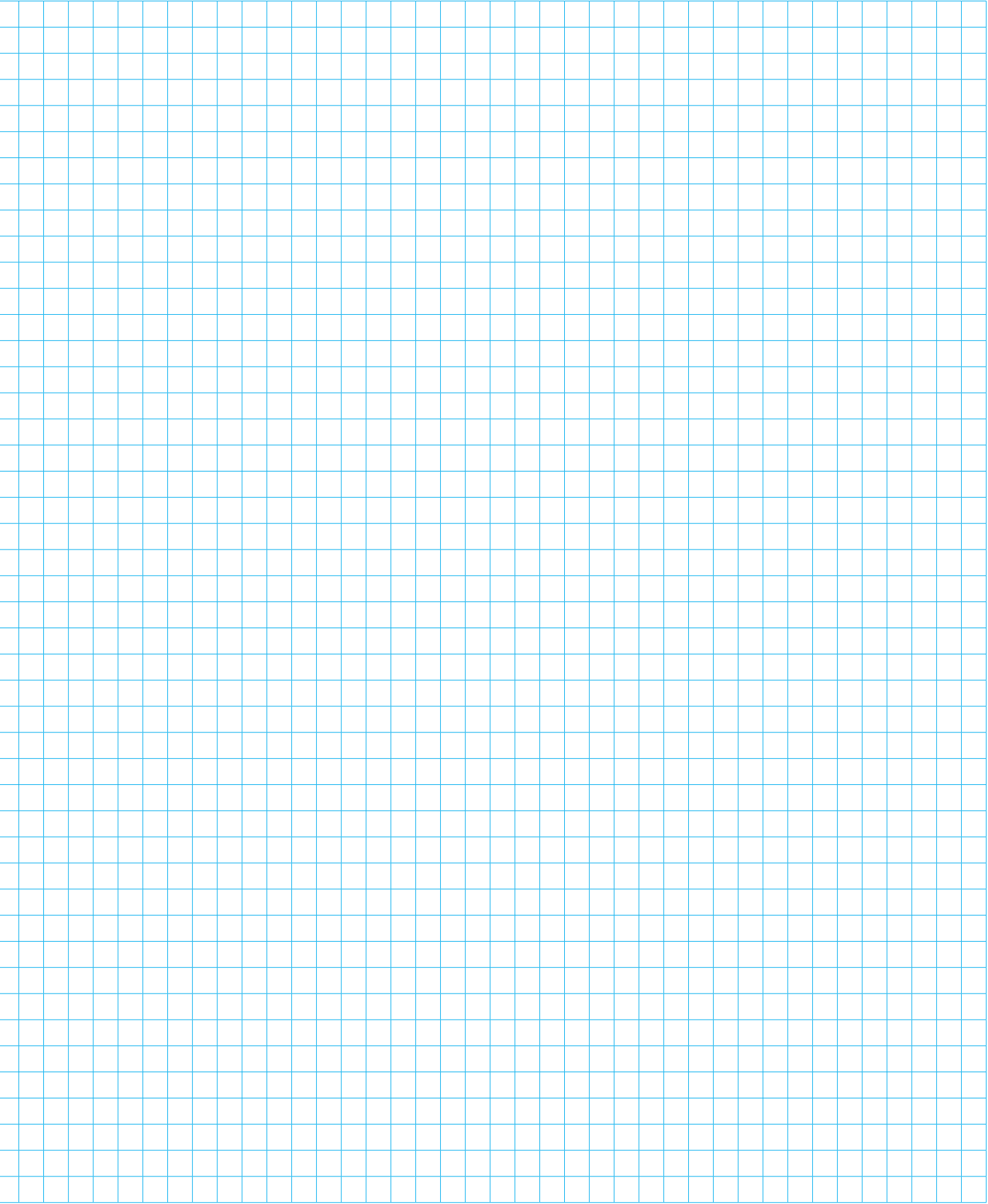
Remember that the following basic principles of setting out the boards may affect the number of boards you'll need to use:

Run the boards across the most common line of tread, not with it.

Separate all joints on adjacent boards by at least 2 bearers.

All deck pieces should be long enough to be secured to at least 3 bearers.







Robust

Robust

- Strong construction
- Wear & impact resistant
- Will not warp like timber
- Low sound levels



Slip Resistant

Safety

- Low slip surface in wet or dry conditions
- Will not crack or splinter
- Will carry high loads
- No sharp edges or splinters



Low Maintenance

Low Maintenance

- Easily cleaned
- Unlike timber it won't promote mould growth
- Doesn't need treating, varnishing or painting



100% Recyclable

Environmental

- 100% Recyclable
- No paints or preservatives required
- Manufactured under ISO14001 Environmental Management Certification



Long Life

Long Life

- Will not rot
- Does not require maintenance
- 10 year performance guarantee
- Outlasts timber



Product Testing

Product Testing

- Fire Classification - BS EN 13501-1 : 2008
- Slip Resistance: BS7976 - 2
- Load Span: ref BS EN 1991-1-1 : 2002

DEKBOARD®

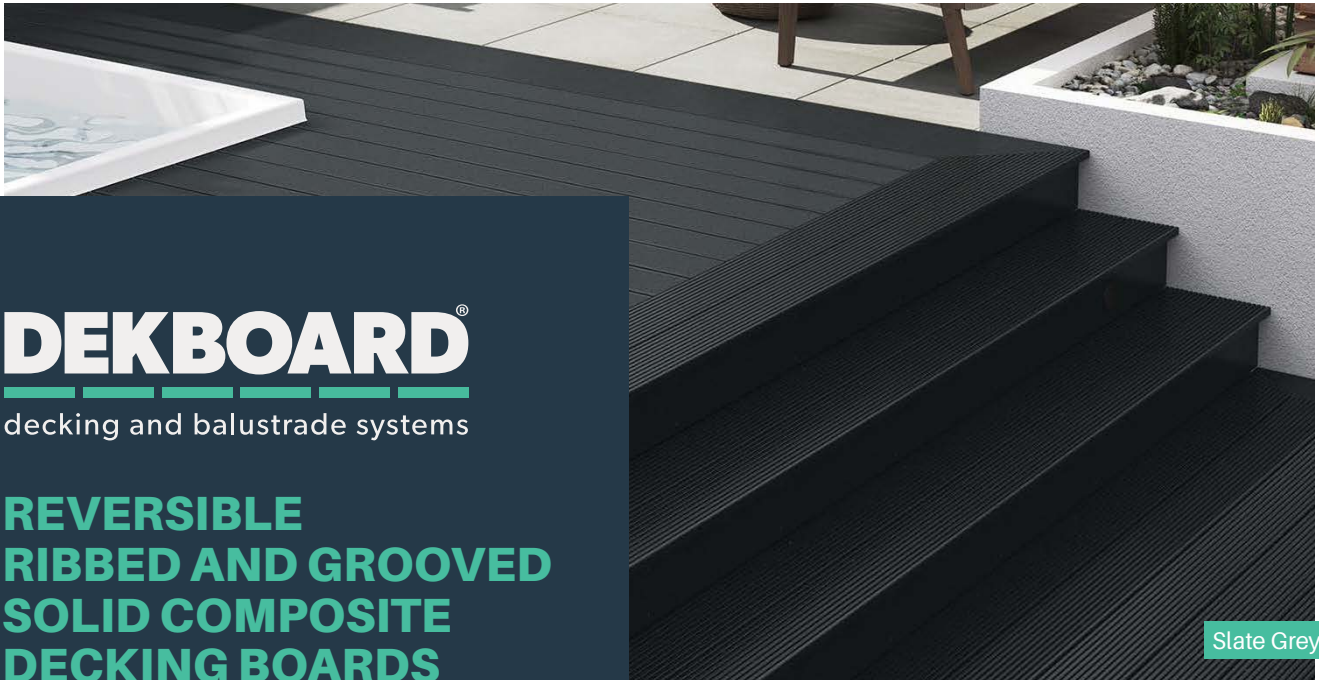
Billet Lane
Normanby Enterprise Park
Normanby Road
Scunthorpe
North Lincolnshire
DN15 9YH

01724 848500
sales@dekboard.co.uk



www.dekboard.co.uk

Due to the limitations of the printing process the swatches and photography in this brochure should be taken as a guide and not an accurate representation of the actual product colour.



Slate Grey

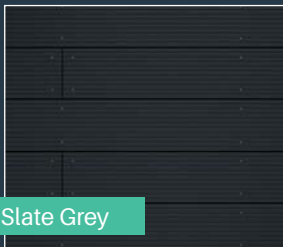
DEKBOARD®

decking and balustrade systems

REVERSIBLE RIBBED AND GROOVED SOLID COMPOSITE DECKING BOARDS

DekBoard reversible composite decking offers the appeal of timber with none of the hassle. Manufactured from an eco-friendly Wood Polymer Composite material, this decking has a low slip potential and is suitable for use in both residential and commercial landscaping projects

Colour options



Slate Grey



Light Brown

Our stylish boards offer a number of great features.



Slip resistant

With high levels of slip resistance, our boards are designed to keep you safe in different conditions.



Low maintenance

We truly understand the value of your time, meaning that our decking will not need sanding or sealing and is easy to clean.



Splinter free

With both style and safety in mind, our boards are designed to be tough, durable and splinter free.



Rot & split resistant

Our high-quality boards are carefully made to last and will not rot or split.



Warranty

25 Year structural product warranty



Recycled content

Made from 95% recycled and sustainably sourced materials.

dekboard.co.uk

Contact us today for a free quote or for more information:

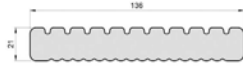
Tel: 01724 848500 | Email: sales@dekboard.co.uk

DekBoard Reversible Composite Decking

Specification

| | | | | | |
|------------------|-------|--------------|------------------------|-----------|-------------------------|
| Standard length: | 3.6m | Material: | Wood polymer composite | Coverage: | 0.5m ² |
| Profile height: | 21mm | Solid board: | Yes | Warranty: | Residential - 25 years* |
| Profile width: | 136mm | Finish: | Ribbed or Grooved | Warranty: | Commercial - 25 years* |
| ** MOQs apply | | Reversible: | Yes | Weight: | 3.0kg/m |
| | | | | *Warranty | |

Deck board profile



21mm x 136mm – Grooved / Ribbed Reversible
 3.6m standard stocked length
 Designed for use with face fixings

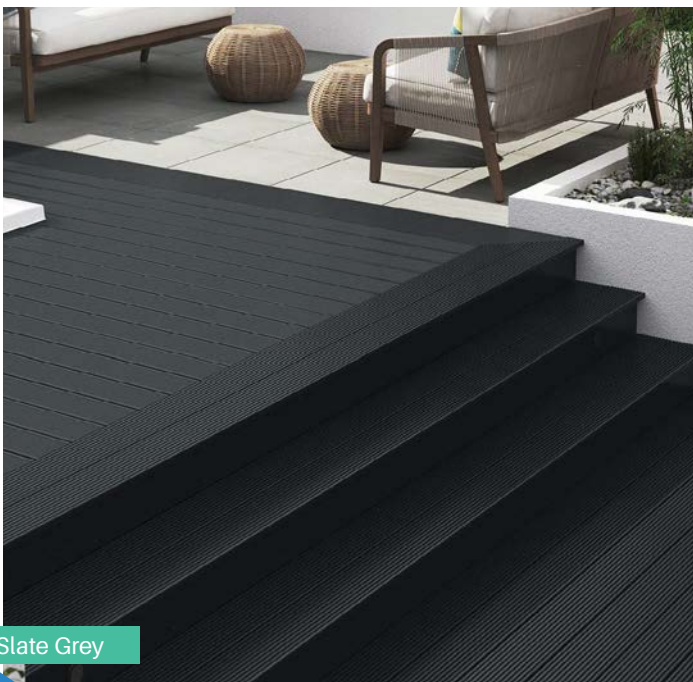
Fascia board profile



19mm x 136mm
 3.6m lengths
 To create a neat finish to the deck sides



Light Brown



Slate Grey

DEKBOARD®

Normanby Enterprise Park
 Billet Lane
 Scunthorpe
 North Lincolnshire
 DN15 9YH

01724 848500

sales@dekboard.co.uk

dekboard.co.uk



Due to the limitations of the printing process the swatches and photography in this leaflet should be taken as a guide and not an accurate representation of the actual product colour.

Kestrel Customer Services

Kestrel has a dedicated Customer Services Team to help distributors and stockists to place their orders or if you have any order / dispatch related enquiries.

Customer Services are available
8.30am to 5.15pm Monday to Thursday
8.30am to 5pm on Fridays.

Tel:
+44 (0)8702 406107
or
+44 (0)8702 406197

Fax: +44 (0)8702 406116 or +44 (0)8702 406113

Order related enquires please email:
kestrel.sales@kestrelbce.co.uk

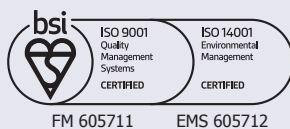
For all general enquiries email:
info@kestrelbce.co.uk

Estimating Enquiries

Specification Tel : 01724 400 454
Specification Fax : 01724 280 241
Specification email : spec@kestrelbce.co.uk



This document is printed on environmentally friendly paper



In accordance with the guidance in current Building Regulations, Approved Document B, it is required that specifiers and contractors make provision for the inclusion of suitable fire barriers in buildings where cavities are introduced during the installation of cellular PVC cladding systems.
Search for latest Fire safety approved documents here: <https://www.gov.uk/government/publications> and <https://www.nhbc.co.uk>



www.kbp.co.uk

KESTREL
rely on it