



Leicester
Building Plastics

FORZA

COMPOSITE RANGE
CLADDING

FITTING INSTRUCTIONS

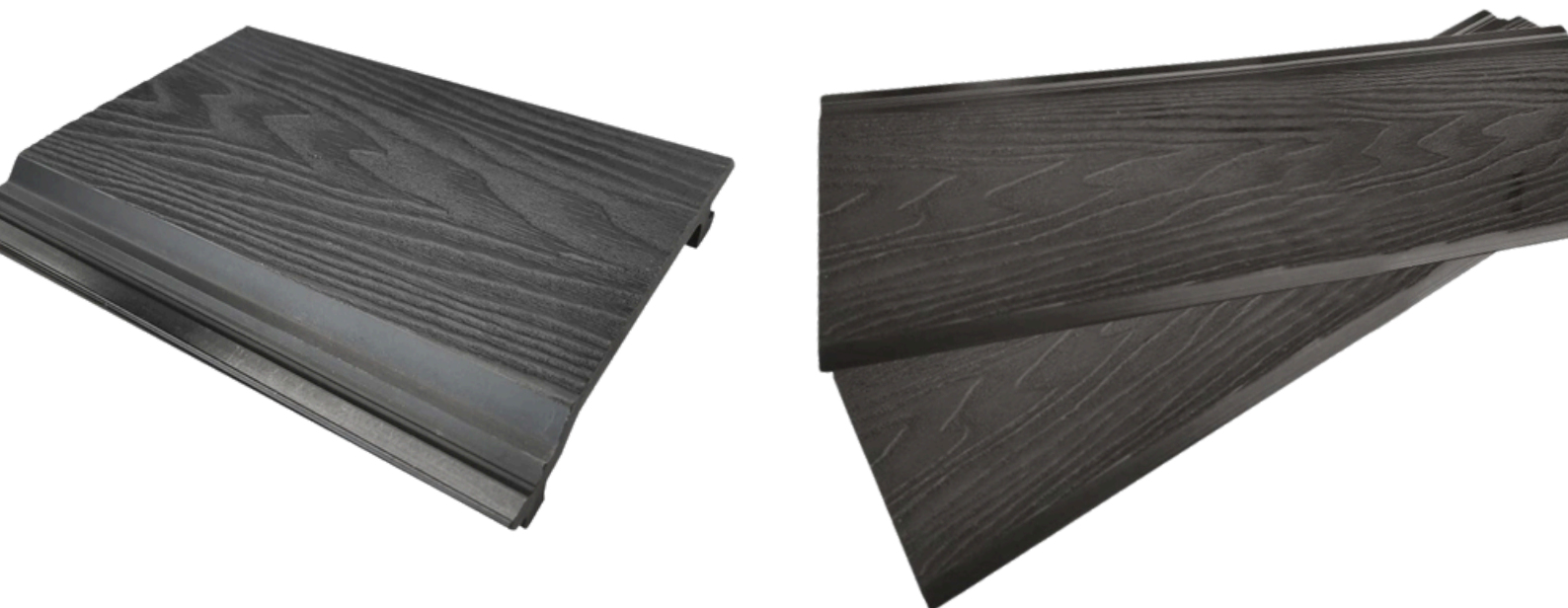




TABLE OF CONTENTS

02.
CONTENTS

03.
INFORMATION

04.
STORAGE &
HANDLING

05.
PREPARATION &
FITTING

06.
FITTING

07.
FITTING

08.
CARE &
CLEANING



Whilst our composite materials are highly durable we do recommended you follow the below guidelines for storage, handling and installing, to ensure products are kept in the best condition. Please refer to our warranty for further information.

BOARD COLOUR VARIATION

- Forza Composite Cladding is crafted using a blend of materials, including wood fibres, which naturally introduces colour and grain variation—a characteristic that enhances its resemblance to real timber.
- Natural Variation: Colour differences may appear between cladding, even if they're from the same order or batch.
- Batch Differences: Cladding purchased at different times are likely to show noticeable shade differences.
- Project Splitting: If Cladding is installed in separate phases, even using cladding from the same batch, the stabilisation and weathering will vary. This can result in inconsistent appearance across areas.

COLOUR STABILISATION

- All Forza Composite products contain UV stabilisers; however, due to their natural elements, all Composite products will undergo an initial colour stabilisation process. This may result in some changes in colour during the first few months after installation as the product acclimatises to its environment



STORAGE & HANDLING

FORZA CLADDING



STORAGE

- Materials should be stored under cover in shade, and protected from weather until ready to install.
- Leicester Building Plastics will not be held responsible for issues that arise from poor storage as per Forza warranty.

HANDLING

- Cladding materials should be placed and not dumped when unloading. Cladding should be lifted and set down with care to avoid damage. Do not slide boards over one another.
- Cladding should be carried in the middle and on their edge for best support when moving.
- During installation, avoid sliding or dragging any equipment across the surface to avoid tarnishing the surface.
- The surface of the cladding boards should be kept free of construction debris and material to prevent damage to the boards. As with all sites, surfaces should be kept clean and tidy for the best installation outcome.



PREPARATION

FORZA CLADDING



TOOLS & MATERIALS NEEDED

- Tape Measure
- Circular Saw with a fine tooth blade
- Cordless Drill / Screw Driver
- Spirit Level
- Countersink Drill Bit
- Forza Cladding Starter Clips
- Safety Gear (Gloves, Goggles etc...)



STEP 1 - Planning your Cladding

- The size, shape and orientation of your cladding area should be considered in the early phases of your project. You will need to establish your chosen laying pattern as this will dictate the placement of your joists and the placement of joints (and additional joists) if necessary.
- Also factor in any fixed elements such as window sills, door openings and guttering when planning the design, shape, location, and orientation of your cladding project.

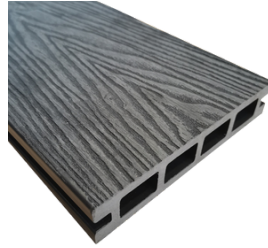
STEP 2 - Acclimatize the Cladding Boards

- Allow the composite boards to acclimatize on-site for at least 72 hours, elevated off the ground and covered to protect from moisture.



FITTING INSTRUCTIONS

FORZA CLADDING



STEP 3 - Install the Joists

- Our cladding system should not be installed without a framework in place. All cladding boards must be installed directly onto a subframe of timber joists.
- When fixing the joist securely to the wall, each joist should be fixed at 300-350mm intervals along its length.
- Ensure joists are laid level against the wall. Packers can be used to level-off any inconsistency in the level of the wall.
- Ensure spacings of 20mm are observed where joist ends of the joists meet the same applies if you are using timber batons. This is to allow for adequate expansion and contraction of the material.

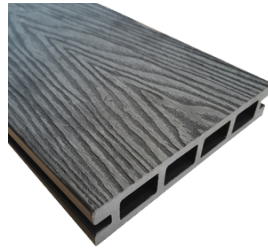
STEP 4 - Secure the Starter Clips

- Begin by attaching Starter Clips to the base of each of your joists using stainless-steel screws. It is important that you mark a level line to ensure a straight row of Starter Clips are evenly fixed to your row of joists.
- Position and securely fix a Starter Clip at the base of each joist to ensure your first cladding board is secure.



FITTING INSTRUCTIONS

FORZA CLADDING



STEP 6 - Fitting the Cladding Boards

- When all Starter Clips are fixed to the base of the joists, align the concealed groove of your first cladding board with the opening of your Starter Clips and position the cladding board into place. If required, tap the top of the cladding board to ensure it is securely fixed into the full run of clips
- Fix the top of the cladding board to the joist with a Cladding Screw. Work along the length of the cladding board to ensure the board is fixed to every supporting joist.
- Slot the concealed groove of the second board into the top groove of your first cladding board. Once the base of the second cladding board is secure, fix the top grooved-channel by pre-drilling the material and fixing with a cladding screw, repeat this until all cladding boards are fitted and secure.
- **We recommend pre drilling and screwing to avoid any cracking or splitting in the cladding boards.**

STEP 7 - Angles, Corners and Joint Trims

- We recommend to use all Forza Composite Range angles, corners and joint trims on your Forza decking project.



CARE & CLEANING

FORZA CLADDING



- To keep your Forza Composite Cladding looking its best and performing well, we recommend a routine clean every 3–6 months to remove dirt, mud, and soil that can build up over time.
- **General Cleaning**
 - Use warm soapy water and a soft-bristled brush.
 - Always scrub along the length of the boards to prevent debris build up that can interfere with drainage.
- **Deep Cleaning**
 - For a more thorough clean, use a jet wash (maximum 3100 PSI).
 - Fit the fan attachment and keep the nozzle at least 250mm away from the surface.
 - Clean along the board length to protect the surface finish and maintain proper drainage.
 - Following these steps will help ensure your Forza Composite Cladding stays clean and in great condition for years to come.

