



Leicester
Building Plastics

FORZA

COMPOSITE RANGE
COMPOSITE DECKING

FITTING INSTRUCTIONS

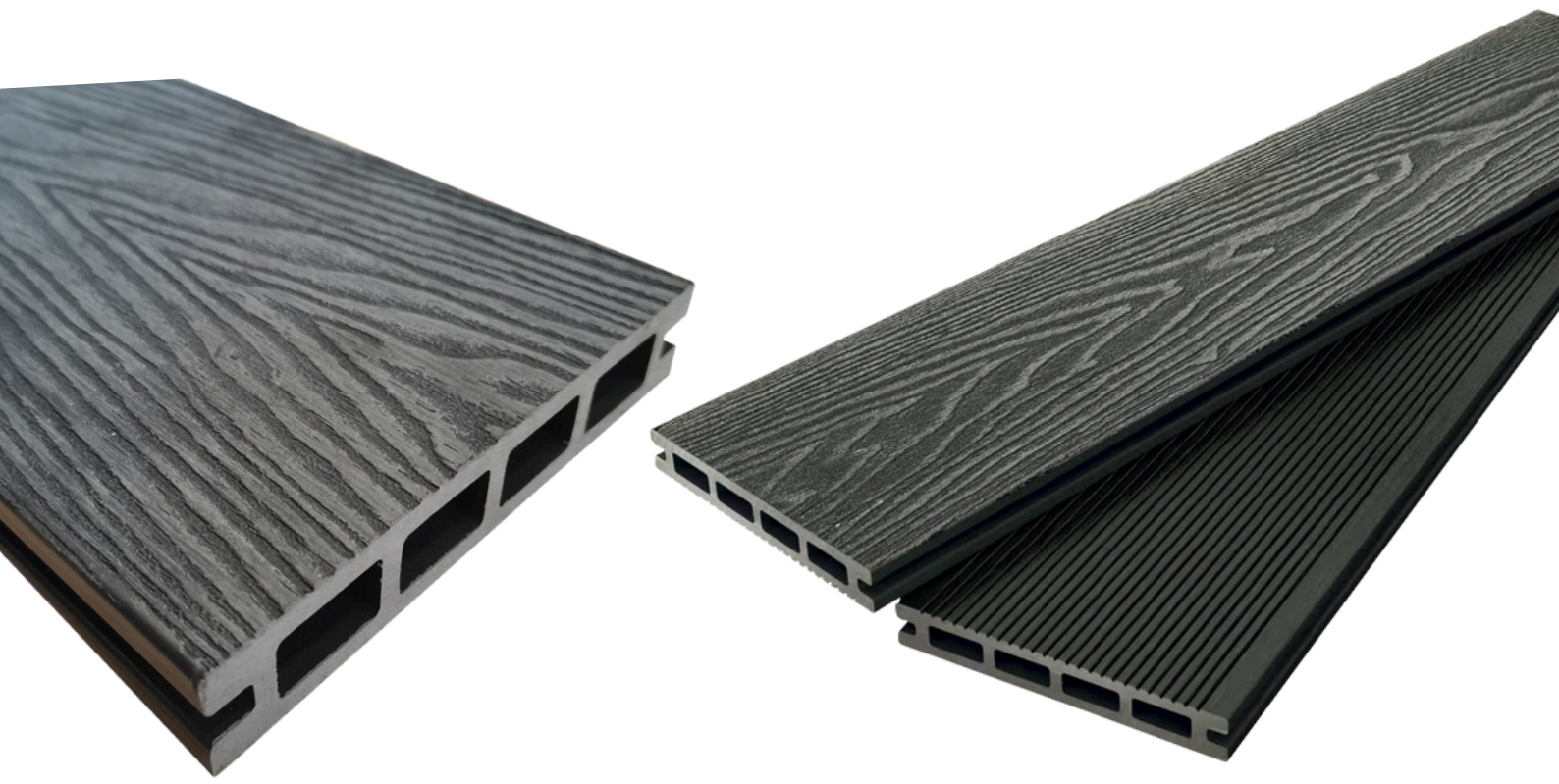




TABLE OF CONTENTS

02.
CONTENTS

03.
INFORMATION

04.
STORAGE &
HANDLING

05.
PREPARATION &
FITTING

06.
FITTING

07.
FITTING

08.
CARE &
CLEANING



Whilst our composite materials are highly durable we do recommended you follow the below guidelines for storage, handling and installing, to ensure products are kept in the best condition. Please refer to our warranty for further information.

BOARD COLOUR VARIATION

- Forza Composite Decking is crafted using a blend of materials, including wood fibres, which naturally introduces colour and grain variation—a characteristic that enhances its resemblance to real timber.
- Natural Variation: Colour differences may appear between boards, even if they're from the same order or batch.
- Batch Differences: Boards purchased at different times are likely to show noticeable shade differences.
- Project Splitting: If decking is installed in separate phases, even using boards from the same batch, the stabilisation and weathering will vary. This can result in inconsistent appearance across areas.

COLOUR STABILISATION

- All Forza Composite products contain UV stabilisers; however, due to their natural elements, all Composite products will undergo an initial colour stabilisation process. This may result in some changes in colour during the first few months after installation as the product acclimatises to its environment



STORAGE & HANDLING

FORZA DECKING



STORAGE

- Materials should be stored under cover in shade, and protected from weather until ready to install.
- Leicester Building Plastics will not be held responsible for issues that arise from poor storage as per Forza warranty.

HANDLING

- Decking materials should be placed and not dumped when unloading. Boards should be lifted and set down with care to avoid damage. Do not slide boards over one another.
- Decking boards should be carried in the middle and on their edge for best support when moving.
- During installation, avoid sliding or dragging any equipment across the board surface to avoid tarnishing the surface.
- The surface of the decking boards should be kept free of construction debris and material to prevent damage to the boards. As with all sites, surfaces should be kept clean and tidy for the best installation outcome.





PREPARATION

FORZA DECKING

TOOLS & MATERIALS NEEDED

- Tape Measure
- Circular Saw with a fine tooth blade
- Cordless Drill / Screw Driver
- Spirit Level
- Rubber Mallet
- Countersink Drill Bit
- Forza Composite Decking Clips
- Safety Gear (Gloves, Goggles etc...)



STEP 1 - Prepare the Subframe

- Joist Spacing: Install joists at 300mm centres for standard installations. For diagonal board layouts, reduce spacing to 250mm.
- Foundation: Ensure the subframe is level and constructed from treated timber or composite materials.
- Drainage: Incorporate a slight slope (approximately 1–2%) to facilitate water runoff.

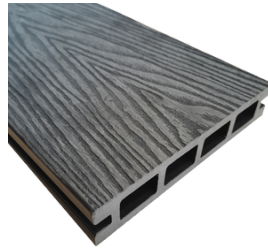
STEP 2 - Acclimatize the Decking Boards

- Allow the composite boards to acclimatize on-site for at least 72 hours, elevated off the ground and covered to protect from moisture.



FITTING INSTRUCTIONS

FORZA DECKING



STEP 3 - Install Starter Clips

- Secure starter clips along the first joist, spaced every 300mm. These clips will hold the grooved edge of the first decking board.

STEP 4 - Lay the first Decking Board

- Insert the first board into the starter clips, ensuring it is flush with the edge of the subframe.
- Use a rubber mallet to gently tap the board into place, ensuring a snug fit.

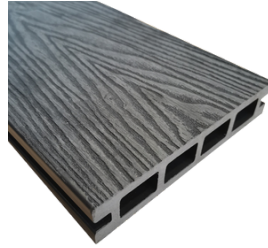
STEP 5 - Secure Subsequent Boards

- **Fasteners:** Utilize Forza Composite Decking clips designed for composite decking.
- **Installation:**
 - Insert clips into the grooves of the decking boards.
 - Align the next board with the clips and press down firmly.
 - Secure the clips to the joists, ensuring the board is tightly fixed.
 - Repeat this process for each subsequent board.
 - If there are any joints within the decking area, allow an expansion gap of 5-8mm between each board as the boards meet at the vertical point.



FITTING INSTRUCTIONS

FORZA DECKING



STEP 6 - Secure the Final Board

- Place the grooved channel on the inside of the final board into the last row of decking clips.
- Pre-drill an oversized pilot hole at a 45 degree angle (where possible) into the grooved-channel on the exposed edge of the final board.
- Screw into the joists at 300mm gaps to secure the final board to the frame.

STEP 7 - Angles and Edge Boards

- We recommend to use all Forza Composite Range angles and corners on your Forza decking project.
- Angles are to be fixed onto the boards using a Polymer Adhesive or Countersink and Screw technique.
- Edge Boards are to be fixed onto the joists using the Forza Starter clips.



CARE & CLEANING

FORZA DECKING



HANDLING

- To keep your Forza Composite Decking looking its best and performing well, we recommend a routine clean every 3–6 months to remove dirt, mud, and soil that can build up over time.
- **General Cleaning**
 - Use warm soapy water and a soft-bristled brush.
 - Always scrub along the length of the boards to prevent debris build up that can interfere with drainage.
- **Deep Cleaning**
 - For a more thorough clean, use a jet wash (maximum 3100 PSI).
 - Fit the fan attachment and keep the nozzle at least 250mm away from the surface.
 - Clean along the board length to protect the surface finish and maintain proper drainage.
- Following these steps will help ensure your Forza Composite Decking stays clean and in great condition for years to come.

